

# LISTING CATALOG



## ABSOLUTE AUCTION FEATURING EQUIPMENT FROM NYE CONSTRUCTION COMPANY

Thursday, November 7, 2013 9:00 am - Fairmont, North Carolina

Sale Site Address: 710 North Walnut Street, Fairmont, NC 28340

### AUCTIONEER NOTE

*Ronald M. Nye Construction Company Inc* has been specializing in general contracting services for both commercial and residential customers over 45 years. Being a company known for their professionalism and customer relations, *Ronald M. Nye Construction Company Inc* is known throughout the contractor community has a company you can trust. Thank you for attending our auctions!



Auction Conducted By:

**Lloyd Meekins & Sons Auction Company**

4070 NC Hwy 211 East, Lumberton, North Carolina 28358

Tel: 910.739.0547 Fax: 910.738.1389 Email: [info@meekinsauction.com](mailto:info@meekinsauction.com)

Meeting the needs and expectations of its  
Customers for over 50 years

# AUCTION TERMS OF BIDDING AND SALE

Meekins Auction Company - Meeting the needs and expectations of its customers for over 50 Years



## ***PAYMENT TERMS***

---

**Every Item is sold as-is, where is with no warranties or guarantees**

**Administrative Fee:** All purchased lots will be subject to an administrative fee of 10 %

**Payment Terms:** All payments are made in US funds. Methods of payment are cash, wire transfer, certified check, or company/personal check accompanied with bank letter guaranteeing payment.

- All items are subject to state and local tax law. The North Carolina Sales Tax (Robeson County) is **7.00 %** and applies to all sales, unless proper tax exemption forms are completed. **There will be no sales tax charged on this auction on items belonging to Ronald M. Nye Construction Company Inc.**

**Sales Tax Exemptions:** Buyers qualifying for sales tax exemption must present a copy of their sales tax I.D. numbers and complete a NC certificate of exemption (E595-E), or have a current exemption form on file, in order to be exempted from sales tax on applicable purchases.

**Export Sales Tax Exemptions:** Buyers purchasing for export must complete and execute a NC affidavit of export (E599-C) for sales tax exemption. Items will not be released until this required document is received.

***Every Item is sold as-is, where is. All sales are final.***

**Notice:** All bidders attending/participating in this auction agree that they have read and have full knowledge of these terms and agree to be bound thereby.

***No Guarantees or warranties expressed or implied. This catalog is only a guide. Please inspect equipment.***

Based on information gathered from consignors and other reliable sources, we believe information to be correct and valid, but the accuracy is not guaranteed or warranted by Lloyd Meekins & Sons Auction Company. Please inspect equipment.

***Meekins Auction Company does not guarantee year models, descriptions, serial numbers or VIN numbers. Please inspect equipment.***

### **Additional Terms:**

- **In the event of when (2) ring men claim they have the winning bid**, and the auctioneer has declared the item sold, the Auctioneer reserves the right to re-open the bidding to all bidders. Auctioneer reserves the right to choose the increment of the bidding and reject any bids if he feels it is in the best interest of the Seller.
- If a bid is made **“while the hammer is falling”** in acceptance of a prior bid, the auctioneer may reopen the bidding or declare the goods sold under the bid on which the hammer was falling.
- A **“Late Bid”** is not an accepted bid once the auctioneer has declared the item sold.



# AUCTION TERMS OF BIDDING AND SALE

Meekins Auction Company - Meeting the needs and expectations of its customers for over 50 Years



## ***PERSONAL INJURY AND DAMAGE***

---

Bidder acknowledges responsibility for any personal injury or property damage caused by the bidder, or his agent, and further agrees to hold Meekins Auction Company harmless from any personal injury to himself or his agents and any property damage incurred on auction premises. **All children under the age of 18 are not allowed on sale site.** I release Meekins Auction Company and the Seller from any and all liability connected with the removal and transportation of my purchases and any and all future uses for the equipment purchased here today.

## ***VEHICLE TITLE INFORMATION AND REQUIREMENTS***

---

- **No titles will be given out on the day of the auction!**
- All title-item purchases will be charged a **\$25 title-processing fee.**
- Auction Company shall provide a title and paperwork to be able to register motor vehicles and /or trailers.
- **Please check your invoice name for accuracy.** (Names on invoices cannot be changed after sale day.)
- All titles will be mailed out by certified mail within ten to fifteen business days after payment has been received.

## ***AUCTION COMPANY INFORMATION***

---

**Lloyd Meekins & Sons Auction Company - NC Firm License #858**

**Office Address:** 4070 NC Hwy 211 East, Lumberton, NC 28358

**Toll-Free Office:** 910.739.0547 • **Fax:** 910.738.1389

**Email:** info@meekinsauction.com • **Web:** www.meekinsauction.com

**Auctioneers:**

Lloyd Mickey Meekins, Jr. #228 - Stacey Johnson #7273 - Lloyd Trey Meekins, III #8137

**Sales Representatives and Sale Site Managers:**

Chris Cea, Sale Site Manager, 910.633.8244

Avery Brewer, Sale Site Manager, 910.608.9457

Trey Meekins, 910.258.4383

EB Webb, 252.245.1405

**Agency:** The auctioneer is acting as agent only and is not responsible for the acts of its principals or consignors.

**Note:** The Auctioneer may add other terms and conditions of sale, such as additional terms, change in item description, etc. to be announced prior or during the auction.

## AUCTION TERMS OF BIDDING AND SALE

Meekins Auction Company - Meeting the needs and expectations of its customers for over 50 Years



### ***EQUIPMENT REMOVAL INFORMATION***

**All equipment must be removed from sale site by Monday, November 11<sup>th</sup>, 2013.** Equipment not removed by designated date, buyer may be charged storage fees. Removal of equipment and insurance is the buyers' responsibility.

#### **Auction Day Equipment Loading Procedure Important Notice**

To insure the safety of our valued customers and employees, equipment may not be loaded or driven out until the conclusion of the auction or until auction management determines it is safe to do so.

Meekins Auction Company employees will not load equipment into containers, dismantle machines, arrange for 3<sup>rd</sup> parties to assist in loading equipment, and will not load or operate loaders after dusk.

#### **YARD LOADING HOURS: Monday - Friday, 8:30 am –4:30 pm, Closed Saturday and Sunday**

For equipment release, invoice must be paid in full. An equipment release form can be obtained from the main office for removal.

### ***EQUIPMENT HAULING COMPANIES***

**Yarborough Transport Company:** 800.334.0160

**Rocky Top Trucking Inc:** 800.243.3403

**Landstar (TLC) Hauling Company:** 888.558.0008 (Nationwide Availability)

**Global Relogistics Inc (International):** 877.945.2189 Ext #314

**Mangum's Heavy Equip Hauling:** 800.869.8973

**Joshua Transport:** 360.690.8288

**Bent Creek Transport:** 919.427.7648

### ***UPCOMING AUCTIONS***

**FRIDAY, DECEMBER 27<sup>th</sup> 2013**

## **19<sup>th</sup> ANNUAL DECEMBER CONTRACTORS AUCTION**

**8:00 am start – Sale Site Address: 4070 NC Hwy 211 East, Lumberton, NC 28358**

- **Auctioneer Note:** Major yearend public auction consisting of earth moving equipment, paving and compaction equipment, forestry equipment, heavy duty trucks and trailers, support equipment, landscaping equipment, agricultural equipment, attachments, pickups, sport utility vehicles, automobiles, and other items. Major absolute packages of heavy construction equipment and trucks will be available on this auction. Consign your equipment today!

#### **Interested in selling your equipment or trucks for this auction**

Whether you have one piece of equipment, or an entire fleet of trucks to sell, Meekins Auction Company can turn your valuable assets into cash – quickly, efficiently and for the best possible returns

#### **Selling Benefits to help your company achieve the best return on the sale of your assets.**

**Flexible Contract Options:** Net Guarantee, Straight Commission, Out-Right Purchase, Off Site Auctions

**Contact one our auction sales representatives today! 910.739.0547**

4070 NC Hwy 211 E  
LUMBERTON, NC 28358

Printed:11/05/2013 11:00

(910) 739-0547

www.meekinsauction.com

## Catalog for Auction:Absolute Auction for Nye Construction

This catalogue is meant merely as a guide. The auctioneer does not warrant the genuineness, accuracy or count of any items described herein.

Lot Num	Description	Lot Num	Description
1	_____MAREE ISLAND 52 INCH WHITE CEILING FAN	18	_____DEWALT D21008 (3/8 INCH) DRILL
2	_____BOSTITCH HEAVY DUTY NAIL GUN	19	_____BLACK AND DECKER DRILL AND SANDER HAND TOOLS
2A	_____PORTERCABLE TIGER SERIES SAW ZALL	20	_____HILTI TE17 ROTARY HAMMER
3	_____SANSUI 19 INCH HD LCD TV/MONITOR	21	_____DEWALT D25600 ROTARY HAMMER DRILL
4	_____POWERNAILER MODEL 45 NAIL GUN, sn:981469, equipped w/ powercleats and rubber mallet	22	_____BOSTITCH HEAVY DUTY NAIL GUN
5	_____SINGER LAZER STORM (3 in 1) VACUUM (UNUSED)	23	_____HILTI TE17 ROTARY HAMMER DRILL
6	_____BOSTITCH HEAVY DUTY NAIL GUN	24	_____PORTER CABLE HAMMER DRILL
7	_____MAKITA 3621 (1.25HP) PLUNGE ROUTER	25	_____POULAN PRO PP4218AVX (42 CC) CHAIN SAW
8	_____DAVID WHITE MARK 4PL SELF-LEVELING LASER (UNUSED)	26	_____MAKITA HP2050F 2-SPEED HAMMER DRILL
9	_____BOSCH 11212VSR BULLDOG ROTARY HAMMER, PORTER CABLE TIGER SAW	27	_____ASSORTMENT OF SHOP ELECTRIC HAND TOOLS
10	_____HKP BOLT CUTTER	27A	_____BOSCH 1529B (18 GAUGE) NIBBLER, PORTERCABLE CEMENT SLIDING SHEAR AND SEAMING TOOLS
11	_____POULAN P3314 (14 INCH) CHAIN SAW	28	_____SKIL 6265 (3/8 INCH) ELECTRIC DRILL
12	_____BOSTITCH FRAME NAIL GUN	29	_____ROCKWELL 125 CONTRACTOR GRADE PLANER
12A	_____MAKITA 4340FCT ORBITAL JIG SAW	30	_____MAKITA 9900B BELT SANDER
13	_____MAKITA 5007F (7 1/4 INCH) CIRCULAR SAW	31	_____HITACHI NV45AB2 ( 1 3/4 INCH) COIL NAILER GUN
14	_____MAKITA 5007F (7 1/4 INCH) CIRCULAR SAW	32	_____DEWALT DW511 (1/2 INCH) HAMMER DRILL
15	_____MAKITA 5005A (5 1/2 INCH) CIRCULAR SAW	33	_____ASSORTMENT OF SHOP ELECTRIC HAND TOOLS
16	_____PORTER CABLE CORDLESS SHOP HAND TOOLS	34	_____RAMSET COBRA SERIES FASTENING TOOL
17	_____HILTI TE17 ROTARY HAMMER DRILL		

Equipment removal date: Monday, Nov. 11, 2013

4070 NC Hwy 211 E  
LUMBERTON, NC 28358

Printed:11/05/2013 11:00

(910) 739-0547

www.meekinsauction.com

## Catalog for Auction:Absolute Auction for Nye Construction

Lot Num	Description	Lot Num	Description
35	_____ASSORTMENT OF DEWALT ELECTRIC HAND TOOLS	54	_____ (4) CLASSIC FORD MOTOR COMPANY AUTOMOTIVE RIMS
36	_____MILWAUKEE HEAVY DUTY HAMMER DRILL	55	_____COMPASS DUAL-HEAD EMERGENCY LIGHTING FIXTURES
37	_____OFFICE CHAIR AND COUCH	56	_____LARGE QUANTITY OF PLYWOOD BUILDING MATERIAL
38	_____SOUTHERN TRADITION UNUSED LIVING ROOM COUCH	57	_____DRYWALL-SHEETROCK PANELS (LARGE QUANTITY)
39	_____ (2) OFFICE CHAIRS	58	_____DELTA TS200LS SHOPMASTER TABLE SAW, sn:293941Q, equipped w/ stand, accessories, 1 1/2 HP electric powered
40	_____RCA TELEVISION SET AND (3) CHAIRS	59	_____WOODEN 5 PIECE DINING ROOM SET (Round Table, 4 Chairs)
41	_____CHILDRENS BEDROOM SUITE	60	_____CAROLINA 8 FT WOODEN STEP LADDER
42	_____BOOKSHELF AND ROLL OF CARPET	61	_____JOB SAEFTY EQUIPMENT (Harnesses, Hard Hats, Vests, etc)
43	_____50 FT ALUMINUM SCAFFOLDING WALK BOARD	62	_____ALUMINUM SHOP WORK HORSES
44	_____LARGE ASSORTMENT OF JOB PRODUCTS, SUPPLIES, ACCESSORIES (Items located on top of mezzanine in shop building)	63	_____ALUMINUM SHOP WORK HORSES
45	_____OFFICE DESK AND APPLIANCES	64	_____G.E. TELEVISION SET WITH STAND
46	_____CLOSET DOORS (LARGE QUANTITY)	65	_____BLUEPRINT/FLAT FILE STORAGE CABINET
47	_____MOHAWK COMPANY FLUSH HEAVY DUTY INTERIOR DOOR	66	_____RCA TELEVISION SET
48	_____ANTIQUE DECORATIVE WOODEN CLOSET DOORS	67	_____ZENITH TELEVISION SET
49	_____MAGNAVOX TELEVISION SET AND FURNITURE CABINETS	68	_____BLUEPRINT/FLAT FILE STORAGE CABINET
50	_____OFFICE CHAIR AND END TABLES	69	_____BLUEPRINT/FLAT FILE STORAGE CABINET
51	_____SINGER SEWING MACHINE AND QUILTING TABLE, sn:AL746982	70	_____BLUEPRINT/FLAT FILE STORAGE CABINET
52	_____OWENS/CORNING PIPE INSULATION	71	_____WOODEN SIX PANEL INTERIOR DOORS
53	_____ATTIC DOOR STEPS	72	_____WOODEN SIX PANEL INTERIOR DOORS

Equipment removal date: Monday, Nov. 11, 2013

4070 NC Hwy 211 E  
LUMBERTON, NC 28358

Printed:11/05/2013 11:00

(910) 739-0547

www.meekinsauction.com

## Catalog for Auction:Absolute Auction for Nye Construction

Lot Num	Description	Lot Num	Description
73	_____LARGE QUANTITY OF INTERIOR DOORS	90	_____MASONRY HAND TOOLS AND ACCESSORIES
74	_____REGENT TRIPOD SHOP LIGHT	91	_____SEARS ROEBUCK AIR COMPRESSOR-PAINT SPRAYER, sn:106153542, equipped w/ air hose, electric powered, mobility kit
75	_____MAGIC CHEF ELECTRIC OVEN RANGE KITCHEN APPLIANCE	92	_____MAXXAIR BF36DD SHOP FAN, sn:4724273648, electric powered, 36 inch fan width
76	_____WOODEN HOME OFFICE DESK	93	_____MAXXAIR BF36DD PORTABLE SHOP FAN, sn:4724273636, electric powered, 36 inch fan width
77	_____TARGET PORTA-CUT CONCRETE SAW, sn:PAC905-80415, equipped w/ Wisconsin gas engine, walk behind operation, wet dry, 14 inch blade	94	_____LINCOLN ELECTRIC WELDON POWER 125 WELDER GENERATOR, sn:U1970208349, equipped w/ Briggs & Stratton 9HP engine, 125 amps, 4500 watts generator power, 115/230 volt outlets, DC Stick Welder series, welding leads and accessories, mobility kit, meter reading: 172 hrs
78	_____OFFICE FURNITURE AND KENMORE MICROWAVE	95	_____KENMORE QUIET GUARD SERIES VACUUM CLEANER
79	_____AUTUMAIRE 48 INCH PORTABLE SHOP FAN	96	_____VACUUM CLEANERS (LARGE QUANTITY)
80	_____SHOP BOX FAN	97	_____KELVINATOR AUTOMATIC DRYER AND MULTI-SPEED LAUNDRY WASHER
81	_____HOME FURNITURE ITEMS AND FOLDING CHAIR	98	_____ (2) GLASS PANEL OFFICE ENTRANCE DOORS
82	_____2005 REDDY HEATER 170T PRO SERIES FORCED AIR HEATER, sn:016B44747, equipped w/ 170,000BTU/Hr capability, multi-fuel, thermostat, mobility kit	99	_____ASSORTMENT OF INTERIOR ENTRY DOORS
83	_____EX-CELL XGB5010-2 GENERATOR SET, sn:9912129474, equipped w/ Briggs & Stratton gas engine, skid mounted, 5000 watt capability	100	_____WOODEN COLUMNS (QUANTITY OF 3)
84	_____AUTUMAIRE 48 INCH PORTABLE SHOP FAN	101	_____D.B.M. SOLID HARD WOOD FLOORING STRIPS, unused, approximately 40 sq ft
85	_____ZOELLECE ELECTRIC SUMP PUMP	102	_____DELTA MODEL 10 COMMERCIAL TABLE SAW, equipped w/ portable stand, electric powered
86	_____UNI-FLO 20 (UNUSED) ELECTRIC WALL MOUNT SHOP FAN		
87	_____NESCO 2 1/2 TON HYDRAULIC FLOOR JACK, sn:0370254		
88	_____OZTEC ELECTRIC CONCRETE VIBRATOR		
89	_____REBAR SAFETY CAPS		

Equipment removal date: Monday, Nov. 11, 2013



4070 NC Hwy 211 E  
LUMBERTON, NC 28358  
(910) 739-0547  
www.meekinsauction.com

Printed:11/05/2013 11:00

## Catalog for Auction:Absolute Auction for Nye Construction

Lot Num	Description	Lot Num	Description
103	PORTER CABLE JOB-BOSS AIR COMPRESSOR, equipped w/ 150 PSI capability, 6.0 scfm at 90 PSI, oil free, mobility kit, air hose	118	DELTA INDUSTRIAL RADIAL SAW, sn:86E09845, equipped w/ stand, 14 inch blade, electric powered
104	OFFICE CLEANING SUPPLIES	119	CAROLINA 30 TON INDUSTRIAL SHOP PRESS, sn:003283
105	RIDGID 14 INCH COMPOUND MITER SAW, sn:X043960540	120	TAPCO PRO 19 ALUMINUM SLIDING BRAKE, sn:10558-1228654, 10 ft 6 in pro series bender
106	HITACHI D13VF DRILL, BOSCH 11224VS BULLDOG ROTARY HAMMER	121	ASSORTMENT OF CONTRACTOR TOOLS & ACCESSORIES (LARGE QUANTITY)
107	CONTRACTOR TOOLS AND ACCESSORIES	122	ASSORTMENT OF CONTRACTOR TOOLS & ACCESSORIES (LARGE QUANTITY)
108	SHOP-VAC 12 GALLON WET DRY SHOP VACUUM, equipped w/ 5.5 horsepower, hose and accessories, mobility kit	123	PORTABLE SHOP PARTS BIN WITH CONTENTS
109	SHOP-VAC ULTRA PLUS 8 GALLON SHOP VACUUM, equipped w/ 3.5 peak horsepower, wet dry, mobility kit	124	ASSORTMENT OF CONTRACTOR TOOLS & ACCESSORIES (LARGE QUANTITY)
110	MAKITA LS1030 (10 INCH) MITER SAW	125	ASSORTMENT OF CONTRACTOR TOOLS & ACCESSORIES (LARGE QUANTITY)
110A	DEWALT 7 INCH ANGLE GRINDER	126	HDC SHOP HAND TRUCK
111	JOBSITE STORAGE BOX WITH CONTENTS	127	SHOP STORAGE SHELF WITH CONTENTS
112	ARMSTRONG COMMERCIAL CEILING TILE	128	JOBSITE HAND TOOLS (LARGE QUANTITY)
113	PARTNER GAS POWERED CONCRETE SAW	129	BAUER 31540 (40 FT) PROFESSIONAL GRADE FIBERGLASS EXTENSION LADDER
114	HUSQVARNA 272K CONCRETE SAW	130	WERNER D1224-2 (24 FT) PROFESSIONAL GRADE ALUMINUM EXTENSION LADDER
115	KOBALT 10-INCH SLIDING COMPOUND MITER SAW	131	WERNER D6224-2 (24 FT) PROFESSIONAL GRADE FIBERGLASS EXTENSION LADDER
116	AEG,HAWERA, AND RELTON ROTARY HAMMER BITS	132	WERNER FSA12 (12 FT) PROFESSIONAL GRADE FIBERGLASS STEP LADDER
117	CAROLINA HV12 COMMERCIAL BANDSAW, sn:06291		

Equipment removal date: Monday, Nov. 11, 2013

## Catalog for Auction:Absolute Auction for Nye Construction

Lot Num	Description	Lot Num	Description
133	_____ WERNER 6208 (8 FT) PROFESSIONAL GRADE FIBERGLASS STEP LADDER	149	_____ RAMSET SA270 POWER ACTUATED FASTENING TOOL, equipped w/ case and accessories
134	_____ LARGE QUANTITY OF LUMBER BUILDING MATERIAL (Trim, Molding, Millwork, etc)	150	_____ TOPCON MARKSMAN RL-60B LASER LEVEL, sn:QA6845, equipped w/ case, tripod, and accessories
135	_____ WERNER 6208 (8 FT) PROFESSIONAL GRADE FIBERGLASS STEP LADDER	151	_____ WIRE-BOND TYPE III ANCHOR SETS AND JOB SUPPLY PRODUCTS
136	_____ WERNER 6206 (6 FT) PROFESSIONAL GRADE FIBERGLASS STEP LADDER	152	_____ PALLET OF SHOP TOOLS, MISCELLANEOUS ITEMS
137	_____ WERNER 6206 (6 FT) PROFESSIONAL GRADE FIBERGLASS STEP LADDER	153	_____ CONTRACTOR TOOLS AND ACCESSORIES (LARGE QUANTITY)
138	_____ WERNER 6206 (6 FT) PROFESSIONAL GRADE FIBERGLASS STEP LADDER	154	_____ DEWALT DW871 (14 INCH) CHOP SAW
139	_____ WERNER 6206 (6 FT) PROFESSIONAL GRADE FIBERGLASS STEP LADDER	155	_____ CONTICO TUFF-BOX TOOL BOX WITH CONTENTS
140	_____ PALLET OF GIANT MIX MASONRY CEMENT TYPE S MIX	156	_____ DEWALT DC987 (18 VOLT) XRP CORDLESS DRILL-DRIVER
141	_____ PALLET OF MASONRY CEMENT TYPE S MIX AND SAKRETE PLAY SAND	157	_____ DEWALT DW303 RECIPROCATING SAW
142	_____ ASSORTMENT OF CONTRACTOR TOOLS & ACCESSORIES (LARGE QUANTITY)	158	_____ (3) SHOP UTILITY FLATS/CARTS
143	_____ LARGE QUANTITY OF SHOP HAND TOOLS AND TOOL CASES	159	_____ CONTICO XTREME-TUFF TOOL BOX WITH CONTENTS
144	_____ DEWALT DW705 (12 INCH) COMPOUND MITER SAW, sn:088078	160	_____ DUAL SALES COMPANY REBAR BENDER WITH CUTTING BLADES
145	_____ CAROLINA INDUSTRIAL AG80 (3/4 HP) SHOP GRINDER, sn:6975	161	_____ BOLENS BL150 (31 CC GAS POWERED) 17 INCH CUT GRASS WEED TRIMMER
146	_____ CLS AB300 ROTATING LASER, sn:1645, equipped w/ tripod, case, and accessories	162	_____ CONSTRUCTION SURVEYING EQUIPMENT (Grade Sticks, Tripods, Levels, etc.)
147	_____ DAVID WHITE UNIVERSAL LT8-300P LEVEL-TRANSIT, sn:B130836, equipped w/ optical plummet, case, tripod, and accessories	163	_____ PITNEY-BOWES POSTAGE WEIGH SCALE
148	_____ MILWAUKEE 6460 (10 1/4 INCH) CIRCULAR SAW, equipped w/ carbide saw blade and metal carrying case	164	_____ DEWALT 14.4V CORDLESS DRILL
		165	_____ BOSCH 1658 (7 1/4 INCH) CIRCULAR SAW
		166	_____ HITACHI C7SB2 (7 1/4 INCH) CIRCULAR SAW

Equipment removal date: Monday, Nov. 11, 2013

4070 NC Hwy 211 E  
LUMBERTON, NC 28358

Printed:11/05/2013 11:00

(910) 739-0547

www.meekinsauction.com

## Catalog for Auction:Absolute Auction for Nye Construction

Lot Num	Description	Lot Num	Description
167	_____ (2) HILTI DX350 FASTENING TOOLS	179	_____ SHOPMADE TILT-DECK UTILITY TRAILER, equipped w/ 3,500LB hauling capability, 5 ft 6 in x 12 ft deck, steel floor, single axle, 215/65R 15 tires, *note: no title available, sold with bill of sale only
168	_____ HILTI TK-1 FASTENING TOOL		
169	_____ RAMSET SA270 POWER ACTUATED FASTENING TOOL	180	_____ YARD ENTRY GATE
170	_____ SHOP STORAGE SHELF WITH CONTENTS	181	_____ INDUSTRIAL SHOP SHELVING RACK UNIT
171	_____ 2000 GENIE GS-1930 SCISSOR LIFT, sn:35008, equipped w/ 19 ft platform work height reach capability, narrow deck, electric powered, 500LB weight platform capacity, extendable platform, remote, hard cushion tires	182	_____ INDUSTRIAL SHOP SHELVING RACK UNIT
		183	_____ INDUSTRIAL SHOP SHELVING RACK UNIT
		184	_____ INDUSTRIAL SHOP SHELVING RACK UNIT
		185	_____ LOADING DOCK CUSHION BUMPERS
172	_____ 1962 INTERNATIONAL HARVESTER FARMALL 140 AGRICULTURAL TRACTOR, sn:18686J, equipped w/ 4 cylinder gas engine, 4 forward and 1 reverse sliding gear transmission, work light package, pto, fast hitch, 12.4-24 rear tires	186	_____ (2) COMMERCIAL STEEL DOORS
		187	_____ STEEL DOOR FRAMES
		188	_____ COFFING 2-TON ELECTRIC UNDER SLING BRIDGE CHAIN HOIST
173	_____ SIDE WINDER G7B48 ROTARY CUTTER ATTACHMENT, sn:37944, equipped w/ 48 inch deck, pto driven, fits fast hitch tractors	189	_____ COFFING 2-TON ELECTRIC UNDER SLING BRIDGE CHAIN HOIST
174	_____ FMCKESKEY F34S DISC HARROW ATTACHMENT, sn:17600, equipped w/ 5 ft working width, 16 disc blades, fits fast hitch tractors	190	_____ LIFT-TEC CRANE AND HOIST TROLLEY ATTACHMENTS
		191	_____ ROOFING MATERIAL, JOB PRODUCTS
175	_____ INTERNATIONAL HARVESTER FARMALL 140 TRACTOR PARTS AND IMPLEMENTS	192	_____ SAFWAY SCAFFOLDING, equipped w/ aluminum platform walk, brackets, poles, caster wheels, etc.)
176	_____ FMCKESKEY 2-ROW BOTTOM PLOW ATTACHMENT, fits fast hitch tractors	193	_____ SAFWAY SCAFFOLDING POLES
177	_____ IH FARMALL 140 TRACTOR PARTS AND IMPLEMENTS	194	_____ WORK PLATFORM FORKLIFT ATTACHMENT
178	_____ SHOPMADE UTILITY TRAILER, equipped w/ 4,000LB hauling capability, 7 ft x 12 ft deck, steel floor, removable side panels, single axle, 205/70R 15 tires, *note: no title available, sold with bill of sale only	195	_____ WORK PLATFORM FORKLIFT ATTACHMENT

Equipment removal date: Monday, Nov. 11, 2013

4070 NC Hwy 211 E

Printed:11/05/2013 11:00

LUMBERTON, NC 28358

(910) 739-0547

www.meekinsauction.com

## Catalog for Auction:Absolute Auction for Nye Construction

Lot Num	Description	Lot Num	Description
196	1998 TEREX SS636 TELESCOPIC FORKLIFT, sn:981422, equipped w/ Rops Canopy, Cummins B3.9L (100HP) engine, 4x4x4, square shooter series, 6,000LB lift capability, 36 ft reach, 13.00-24 tires, meter reading: 1,911 hrs	203	2005 LINCOLN RANGER 225G PORTABLE WELDER GENERATOR, sn:U1050216203, equipped w/ Robin Subaru 20.5HP engine, 10,000 watt capability, 120/240 volts, AC/DC 225 amps welder, mounted on Shopmade Utility Trailer, single axle, steel floor, comes with Columbian Vise, welding leads, tank racks, chipping hammer, torch and gauges, welders sledge, welding blankets, mask, 175/65R 14 power star tires, meter reading: 186 hrs, *note: no title available with trailer, sold with bill of sale only
197	MASTER CRAFT MC5424 ROUGH TERRAIN MAST FORKLIFT, sn:774, equipped w/ Rops Canopy, 3 cyl diesel engine, 5,000LB lift capability, 3 stage mast, side shift, 19.5L-24 front tires, 11L-16SL rear tires, 48 inch forks, meter reading: 3,032 hrs	204	MULTIQUIP WHITEMAN WC-62 PORTABLE CEMENT MIXER, sn:HH-751213, equipped w/ Honda GX240 8.0HP gas engine, 8.82 cu ft maximum drum capacity, 6.0 cu ft mixing capacity
198	FORD 340B UTILITY TRACTOR, sn:C756897, equipped w/ Rops Canopy, 3 cyl (52HP) diesel engine, 6 forward/4 reverse manual-reversing transmission, brush guard, three point hitch, pto, work light package, front end loader attachment, loader bucket, Power Mark Industrial Lug 16.9-24 rear tires	204A	DELTA UNISAW TABLE SAW, sn:03A15052, equipped w/ shop table stand, electric powered, 3 phase, *note: sales tax applies
199	HOWSE 5 FT ROTARY CUTTER ATTACHMENT, fits three point hitch tractors	204B	DELTA MITER COMPOUND TABLE SAW, sn:01H48658, equipped w/ table stand, single phase, assortment of blades, *note: sales tax applies
200	HOWSE 6 FT BOX BLADE ATTACHMENT, fits three point hitch tractors	205	HEAVY DUTY COMMERCIAL COUNTERTOP PANEL
201	1998 FORD F-250 PICKUP, sn:1FTPF2761WNA98258, equipped w/ Triton V8 engine, automatic transmission, ac heat, fm am stereo, 2wd, long bed, heavy duty utility ladder rack, UWS aluminum tool box, odometer reading: 161,538 miles	206	PVC AND DRAINAGE PIPE SECTIONS (Various sizes, makes, and lengths)
202	1999 FORD F-250 PICKUP, sn:1FTPF27L6XNB07124, equipped w/ Triton V8 engine, automatic transmission, ac heat, fm am stereo, 2wd, long bed, heavy duty utility ladder rack, UWS aluminum tool box, odometer reading: 150,427 miles	207	HUSSMAN ICE CREAM/DRINK BOX
		208	FIRE EXTINGUISHERS AND WALL MOUNT SAFETY CASES
		209	DALTILE FLOORING TILE AND ACCESSORIES
		210	DALTILE AND CERCOM FLOOR AND WALL TILE
		211	LYON EMPLOYEE STORAGE LOCKERS
		212	DELTA CONTRACTORS STORAGE BOX (UNUSED)

Equipment removal date: Monday, Nov. 11, 2013

4070 NC Hwy 211 E  
LUMBERTON, NC 28358  
(910) 739-0547  
www.meekinsauction.com

Printed:11/05/2013 11:00

## Catalog for Auction:Absolute Auction for Nye Construction

Lot Num	Description	Lot Num	Description
213	_____WHIRLPOOL WINDOW MOUNTED AIR CONDITIONING UNIT	234	_____TRUE TEMPER WHEELBARROW
214	_____SPUN ALUMINUM FLAG POLE	235	_____TRUE TEMPER CONTRACTOR GRADE WHEELBARROW
215	_____ASSORTED SHOP EQUIPMENT	236	_____TRUE TEMPER LANDSCAPER TOUGH SERIES WHEELBARROW
216	_____LYON EMPLOYEE STORAGE LOCKERS	237	_____AMERIMAX AND ALSCO ALUMINUM TRIM COIL
217	_____BATHROOM 3-SINK VANITY TOP	238	_____FIELD DRAINAGE PIPE WITH SOCK
218	_____UNUSED WINDOW SCREENS	239	_____ALUMINUM STEP LADDERS, WETZLER CLAMPS, MISC ITEMS
219	_____ASSORTMENT OF SHOP EQUIPMENT AND JOB SUPPLIES	240	_____PALLET OF LAFARGE CUSTOM BLENDED MASONRY CEMENT
220	_____BETTER BUILT SITE-SAFE CONTRACTORS STORAGE BOX	241	_____ITALIAN ROSE MARBLE
221	_____PORTABLE SHOP FAN, NSS FLOOR BUFFER, TOOL BOX	242	_____DAYTON SUPERIOR CONCRETE JOB SUPPLIES
222	_____ALUMINUM TRIM COIL ROLLS	243	_____PORTABLE SHOP PARTS BIN WITH CONTENTS
223	_____BIL-JAX PRO-JAX UTILITY SCAFFOLDING, equipped w/ caster wheels	244	_____CIRCULAR SAW BLADES AND GRINDING WHEELS, large quantity, various sizes and makes
224	_____MODINE COMMERCIAL GAS HEATING UNIT	245	_____CARBIDE TIPPED CIRCULAR SAW BLADES, GRINDING WHEELS, ACCESSORIES
225	_____DAL-TILE QUARRY TILE AND BASE	246	_____EMPIRE HEATING UNIT AND FILE CABINET
226	_____DAL-TILE QUARRY FLOOR TILE AND BASE (LARGE QUANTITY)	247	_____ (2) UNUSED GLASS WINDOW PANELS
227	_____PALLET OF SINKS	248	_____ASSORTED TOOLS, PARTS, MISC ITEMS
228	_____PALLET OF SINKS	249	_____DAYTON SURE GRIP CONCRETE ACCESSORIES
229	_____LYON EMPLOYEE STORAGE LOCKERS	250	_____QUAL-CRAFT 2200 SERIES SCAFFOLDING LADDER JACKS AND ACCESSORIES
230	_____LYON EMPLOYEE STORAGE LOCKERS		
231	_____KOBALT CONTRACTOR GRADE WHEELBARROW		
232	_____CONTRACTOR GRADE WHEELBARROW		
233	_____TRUE TEMPER CONTRACTOR GRADE WHEELBARROW		

Equipment removal date: Monday, Nov. 11, 2013



4070 NC Hwy 211 E  
LUMBERTON, NC 28358

Printed:11/05/2013 11:00

(910) 739-0547

www.meekinsauction.com

## Catalog for Auction:Absolute Auction for Nye Construction

Lot Num	Description	Lot Num	Description
251	HAMILTON AND FAIRBANKS CASTER WHEELS	273	DAYTON FAN SHUTTERS
252	HOMELITE DP3 DIAPHRAGM WATER PUMP, equipped w/ Briggs & Stratton 4 cycle engine, suction and discharge hose	274	BARREL DRUM DUMP DOLLY
253	CHROMALOX AND MARKEL ELECTRIC HEATERS	274A	(5)UNUSED CONTRACTOR GRADE GROUND BREAKING SHOVELS
254	SQUIRREL CAGE FANS	275	FLEXCO MOLDED WALL BASE
255	POULAN PRO 432 and LAWN-BOY GAS POWERED LEAF BLOWERS	276	CERTAINTED LANDMARK PLUS ROOFING SHINGLES AND ROOF VENTS
256	JET L-80 (2 TON) CHAIN HOIST	277	BOLENS 22 INCH DECK PUSH LAWN MOWER, sn:1H199K28053, equipped w/ Briggs & Stratton 5HP engine, side discharge
257	(2) LIFTING HOOK BLOCKS, WETZLER CLAMPS	278	HEAVY DUTY SHOP CART
258	CONCRETE SUPPORT EQUIPMENT	279	EXTERIOR DOOR
259	SHOP UTILITY CART	280	OAK STAIRCASE RAILING
260	WOODEN SHOP SAW HORSES	281	INTERIOR FOLDING DOORS
261	ADAPA DRY WALL/DOOR CART	282	BLACK MARBLE BUILDING MATERIAL
262	ANTIQUE WASH POT	283	UNTREATED LUMBER
263	PELLA ARCHITECT SERIES WINDOWS (UNUSED)	284	DRY ERASE TEACHING SCHOOL BOARD
264	ROL-LIFT SERIES E (4500LB) PALLET JACK, sn:E311840	285	INTERIOR DOORS
265	CROWN 4000LB PALLET JACK	286	OAK BOARDS AND PLYWOOD PANELS
267	SHOP HAND TRUCK	287	STACK OF MIRROR BOARD BUILDING MATERIAL
268	CHRISTMAS TREE STANDS AND DECORATIONS	288	MAPLE FINISH PLYWOOD
269	BROAN 30 INCH RANGE HOOD (UNUSED)	289	COMMERCIAL PLYWOOD PANELS
270	BARREL DRUM DOLLY	290	INTERIOR DOORS AND ACCESSORIES
271	BARREL DRUM DOLLY	291	PALLET OF QUARRY TILE AND ACCESSORIES
272	SAF-T-CART WELDERS CART	292	STORE DISPLAY SHELF FRAMES
		293	GRIDSTONE FIRE-SHIELD GYPSUM CEILING PANELS

Equipment removal date: Monday, Nov. 11, 2013

4070 NC Hwy 211 E  
LUMBERTON, NC 28358  
(910) 739-0547  
www.meekinsauction.com

Printed:11/05/2013 11:00

## Catalog for Auction:Absolute Auction for Nye Construction

Lot Num	Description	Lot Num	Description
294	INTERIOR DOORS	307	LARGE QUANTITY OF LUMBER BUILDING MATERIAL, SIDING, JOB SUPPLIES, ETC. (REMAINING CONTENTS IN BUILDING)
294A	ROLLS OF CARPET PADDING		
294B	LARGE QTY OF WINDOW BLINDS	308	WELDED BAR ( 1 1/4 INCH) GRATING, approx. 1,500 sq ft
295	INTERIOR DOORS	309	INDUSTRIAL SHOP SHELVING RACK UNIT WITH CONTENTS
296	LARGE QUANTITY OF CABINETS, DOORS, PARTS, BUILDING MATERIAL (Remaining Contents in Building)	310	INDUSTRIAL SHOP SHELVING RACK UNIT WITH CONTENTS
296A	LARGE QTY OF INTERIOR CABINETS	311	LARGE QUANTITY OF LUMBER, DOORS, BUILDING ACCESSORIES (Remaining Contents Under Shelter)
296B	LARGE QTY OF WINDOWS, DOORS, SHINGLES, CONCRETE MIX		
296C	LARGE QTY OF WINDOWS & DOORS	312	OVERHEAD SHOP DOOR OPERATORS, equipped w/ door panels
296D	LARGE QTY OF INTERIOR CABINETS	313	PRECAST CONCRETE DRAINAGE PIPE
297	ASSORTMENT OF INTERIOR DOORS	314	JOBSITE CONTRACTOR HAND TOOLS (LARGE QUANTITY)
298	ASSORTMENT OF COMMERCIAL STEEL DOORS	315	CHAIN LINK FENCE
299	GLASS SLIDING DOORS AND MISC ITEMS	316	WELDERS/INDUSTRIAL SHOP METAL STORAGE RACK c/w contents
299A	TEACHING CHALK BOARD TEACHER ACCESSORY	317	METAL BUILDING STUD CHANNELS
300	ASSORTMENT OF INTERIOR DOORS	317A	CAST IRON TUB
301	(2) COMMERCIAL BUILDING GLASS ENTRANCE DOORS	318	UNI-STRUT BUILDING MATERIAL SECTIONS
302	(3) JELD-WEN PREMIUM CASEMENT WINDOWS (UNUSED)	319	PRE-ENGINEERED METAL BUILDING PRODUCTS
303	CONCRETE EQUIPMENT JOB SUPPLIES	320	SIDING, ROOF, AND TRIM BUILDING PANELS
303A	ASSORTED DOORS AND BUILDING MATERIAL	321	IRONWOOD TRAILER DECK FLOOR BOARDS
304	MASONITE SIX PANEL TEXTURED PREHUNG INTERIOR DOOR (UNUSED)	322	COOKSON ROLLING COMMERCIAL DOOR AND GRILLE
305	ASSORTMENT OF INTERIOR DOORS		
306	ASSORTMENT OF INTERIOR DOORS		

Equipment removal date: Monday, Nov. 11, 2013

4070 NC Hwy 211 E  
LUMBERTON, NC 28358  
(910) 739-0547  
www.meekinsauction.com

Printed:11/05/2013 11:00

## Catalog for Auction:Absolute Auction for Nye Construction

Lot Num	Description	Lot Num	Description
323	REZNOR COMMERCIAL GAS HEATER UNIT	342	W.R. MEADOWS 1100-CLEAR SERIES SEAL TIGHT CONCRETE CURING COMPOUND (Quantity of 8 five gallon buckets)
324	STEEL GUTTERS AND DOWN SPOUT FOOTS	343	PALLET OF ASSORTED SHOP AND JOBSITE SUPPLIES
325	STEEL GUTTERS AND FITTINGS	344	LARGE QUANTITY OF JOB SITE SUPPLIES, PARTS, AND ASSORTED ITEMS
326	MASONRY WALL REINFORCEMENT PRODUCTS	345	ASSORTMENT OF CONTRACTOR TOOLS, PARTS, AND JOB SITE PRODUCTS
327	METAL BUILDING DRYWALL STUDS, TRACKS, AND CHANNEL	346	LARGE QUANTITY OF FLOOR TILE AND ACCESSORIES
328	WIRE CAGE SHOP STORAGE BIN	347	PHILIPS FLUORESCENT LIGHT BULBS (LARGE QUANTITY)
329	WALK-THROUGH SCAFFOLDING	348	DOOR AND WINDOW GLASS PANEL INSERTS
330	WALK-THROUGH SCAFFOLDING	349	MASONRY WALL REINFORCEMENT PRODUCTS
331	CONSTRUCTION WALL BUILDING BRICK UNITS	350	TRIM-TEX RIDGID VINYL DRYWALL BEADS
332	CONSTRUCTION WALL BUILDING BRICK UNITS	351	DRYWALL FRAMING CHANNEL SECTIONS
333	WALL CONSTRUCTION BRICK UNITS	352	MASONRY WALL BUILDING SUPPLIES AND ACCESSORIES
334	HUSSMAN COMMERCIAL (4-DOOR) REFRIGERATOR/DRINK COOLER	353	CONSTRUCTION WALL BUILDING BRICK UNITS
335	HUSSMAN COMMERCIAL (4-DOOR) REFRIGERATOR/DRINK COOLER	354	CONSTRUCTION WALL BUILDING BRICK UNITS (Quantity of 2 Pallets)
336	SHOP STORAGE CABINET	355	CONCRETE SPLIT-FACE MASONRY UNIT BLOCKS
337	GALVANIZED ALUMINUM FLAT CONSTRUCTION SHEET PANELS	356	CONSTRUCTION WALL BUILDING BRICK UNITS
338	STEEL FLAT CONSTRUCTION SHEET PANELS	357	ROMAN WALL BUILDING BRICK UNITS
339	STEEL FLAT CONSTRUCTION SHEET PANELS		
340	CONTRACTOR TOOLS AND JOB SITE PRODUCTS		
341	ASSORTED JOB SUPPLIES AND PRODUCTS		

Equipment removal date: Monday, Nov. 11, 2013

4070 NC Hwy 211 E

Printed:11/05/2013 11:00

LUMBERTON, NC 28358

(910) 739-0547

www.meekinsauction.com

## Catalog for Auction:Absolute Auction for Nye Construction

Lot Num	Description	Lot Num	Description
358	_____CONCRETE MASONRY BRICK UNITS	376	_____COMMERCIAL RESTROOM STALL PANELS
359	_____CONSTRUCTION WALL BUILDING BRICK UNITS	377	_____ARCHITECTURAL WALL BUILDING MATERIAL, approx. 80 linear feet, (2) boxes
360	_____CONSTRUCTION WALL BUILDING BRICK UNITS	378	_____ARCHITECTURAL WALL BUILDING MATERIAL, approx. 120 linear feet, (3) boxes
361	_____CONSTRUCTION WALL BUILDING BRICK UNITS	379	_____LUMBER BUILDING MATERIAL, various sizes and makes, large quantity
362	_____CONSTRUCTION WALL BUILDING BRICK UNITS	380	_____PALLET OF TERRACOTTA ROOF CAP MATERIAL
363	_____SPLIT FACE CONCRETE MASONRY UNITS	381	_____PALLET OF MASONRY CEMENT MIX
364	_____PALLET OF SEALED BRICK PATIO PAVERS	382	_____ASSORTED JOB SUPPLIES
365	_____CONCRETE MASONRY UNIT BLOCKS	383	_____PALLET OF DECORATIVE ROCK BOARD PANELS
366	_____CONCRETE MASONRY UNIT BLOCKS	384	_____STORM-SCREEN DOORS
367	_____CONSTRUCTION WALL BUILDING BRICK UNITS	385	_____DAL TILE QUARRY TILE AND GROUT
368	_____CONSTRUCTION WALL BUILDING BRICK UNITS	386	_____ROLL OF WIRE FENCING
369	_____CONSTRUCTION WALL BUILDING BRICK UNITS	387	_____FIREPLACE BUILDING SUPPLIES
370	_____CONSTRUCTION WALL BUILDING BRICK UNITS	388	_____DOW STYROFOAM (2" AND 1") EXTRUDED FOAM INSULATION (LARGE QUANTITY)
371	_____CONSTRUCTION WALL BUILDING BRICK UNITS	389	_____TIMBERLINE PRESTIQUE 30 HIGH DEFINITION ROOFING SHINGLES
372	_____CONCRETE MASONRY UNIT BLOCKS (Quantity of 2 Pallets)	390	_____PALLET OF TIN ROOFING PANELS
373	_____CONSTRUCTION AND MASONRY BRICK UNITS (LARGE QUANTITY)	391	_____PALLET OF STEEL COMMERCIAL DOORS
374	_____WOODEN CONCRETE FORMS (LARGE QUANTITY)	392	_____CARADCO WINDOWS AND COMMERCIAL RESTROOM PRODUCT SUPPLIES
375	_____PALLET OF SHEET ROCK PANELS	393	_____PALLET OF FLOOR AND WALL TILE
		394	_____SILT FENCE POSTS
		395	_____PALLET OF JOBSITE AND SHOP PRODUCTS

Equipment removal date: Monday, Nov. 11, 2013

4070 NC Hwy 211 E  
LUMBERTON, NC 28358  
(910) 739-0547  
www.meekinsauction.com

Printed:11/05/2013 11:00

## Catalog for Auction:Absolute Auction for Nye Construction

Lot Num	Description	Lot Num	Description
396	U.S. FENCE COMPANY VINYL FENCE SECTIONS	411	MILLWORK BUILDING MATERIAL (LARGE QUANTITY)
397	BRADLEY WASHROOM ACCESSORIES (UNUSED)	412	MILLWORK BUILDING MATERIAL (LARGE QUANTITY)
398	WELDING TANKS FLOOR MOUNT SAFETY STORAGE RACK	413	PLYWOOD PANELS AND CONSTRUCTION MATERIALS
399	PALLET OF DECORATIVE ROCK BOARD PANELS	414	MILLWORK BUILDING MATERIAL (LARGE QUANTITY)
400	ASSORTMENT OF JOB PRODUCTS AND SUPPLIES	415	ANDERSEN PERMA-SHIELD FLEXIFRAME WINDOW
401	ANDERSEN GLASS WINDOWS (UNUSED)	416	ANDERSEN PRIMED CASEMENT PICTURE WINDOW
402	PORTABLE WOODEN SHOP TABLE, TOOL BOXES	417	ANDERSEN PERMA-SHIELD FRENCHWOOD HINGED PATIO DOOR
403	PORTABLE WOODEN SHOP TABLE	418	MILLWORK BUILDING MATERIAL (LARGE QUANTITY)
404	PHILIPS ECON-O-WATT FLUORESCENT LAMPS	419	OFFICE CASHIER/CHECK OUT CUBICLE AND JOB SUPPLY PRODUCTS
405	STORE KRAFT DISPLAY CASE	420	LARGE QUANTITY OF HARDWARE ACCESSORIES (Door Knobs, Locksets, Leversets, fixtures, etc)
405A	JOBSITE ORANGE MESH SAFETY FENCING	421	(2) ATLANTA MILLWORKS A-FRAME WINDOWS
406	2013 TOP LINE TLU-16 UTILITY TRAILER, sn:4UMTU1624DM000339, equipped w/ 7,000LB hauling capability, 6 ft 4 in x 16 ft deck, wood floor, hide-away loading ramps, tandem axle, 205/70R 15 tires	422	(2) SHOP WOODEN STORAGE SHELVES WITH CONTENTS
407	PORTABLE OFFICE TRAILER, equipped w/ 8 ft x 28 ft office body, air conditioning unit, furniture and accessories, single axle, side and rear entrance, 7-14.5 tires, *note: no title available, sold with bill of sale only	423	(2) CORNER WOODEN CABINET UNITS
408	MILLWORK BUILDING MATERIAL (LARGE QUANTITY)	424	HILTI PRODUCT SHOP STORAGE CABINET WITH CONTENTS
409	MILLWORK BUILDING MATERIAL (LARGE QUANTITY)	425	WOODEN SHOP TABLE, PARTS BIN
410	MILLWORK BUILDING MATERIAL (LARGE QUANTITY)	426	(2) ATLANTA MILLWORKS ARCH WINDOWS
		427	PALLET OF ASSORTED SHOP EQUIPMENT, TOOLS, PARTS, ACCESSORIES

Equipment removal date: Monday, Nov. 11, 2013



4070 NC Hwy 211 E  
LUMBERTON, NC 28358  
(910) 739-0547  
www.meekinsauction.com

Printed:11/05/2013 11:00

## Catalog for Auction:Absolute Auction for Nye Construction

Lot Num	Description	Lot Num	Description
428	_____PALLET OF OFFICE EQUIPMENT	445	_____DIAZIT PUMP-IT SERIES BLUEPRINT MACHINE
429	_____PALLET OF OFFICE EQUIPMENT	446	_____ (3) OFFICE CHAIRS
430	_____PALLET OF ASSORTED SHOP EQUIPMENT, TOOLS, PARTS, ACCESSORIES	447	_____HP DESIGNJET 500 LARGE FORMAT WEB CONNECTED COPIER-PRINTER
431	_____ASSORTMENT OF DECORATIVE WINDOWS AND ACCESSORIES	448	_____SAUDER OFFICE DESK
432	_____ANDERSEN AND INDUSTRIAL ROOF WINDOWS/SKY LIGHTS	449	_____CONFERENCE ROOM CONTENTS (Round Table, (5) Chairs, Emerson television set and stand, wall picture, and accessories)
433	_____PALLET OF ASSORTED SHOP EQUIPMENT, TOOLS, PARTS, ACCESSORIES	450	_____WAITING ROOM OFFICE CONTENTS (pictures, (2) chairs, table and lamp, rugs, nick-nacks)
434	_____PALLET OF ASSORTED SHOP EQUIPMENT, TOOLS, PARTS, ACCESSORIES	451	_____CUSTOM MADE DECORATIVE OFFICE DESK
435	_____HARRINGTON 1/2 TON CHAIN HOIST	452	_____SAVIN 8025E OFFICE COPIER
436	_____CHAIN BINDER AND TRAILER HITCH BALLS	453	_____OFFICE DESK
437	_____CROSBY LIFTING SHACKLES	454	_____OFFICE FILE CABINETS, FIRE PROOF CABINETS, STORAGE CABINETS AND ASSORTED OFFICE ACCESSORIES
438	_____ (2) CRAFTSMAN RECONDITIONED ELECTRIC SANDERS	454A	_____ (2) FIREPROOF FILE CABINETS
439	_____DELTA TOOL BOX WITH CONTENTS	455	_____OFFICE DESK equipped w/ HP Pavilion 4450 Computer, LG and View Sonic Monitors, Speakers, and other accessories)
440	_____PALLET OF ASSORTED SHOP EQUIPMENT, TOOLS, PARTS, ACCESSORIES	456	_____GENERAL ELECTRIC L881N CLASS REFRIGERATOR,KITCHEN APPLIANCES, STORAGE SHELF
441	_____ASSORTMENT OF INTERIOR WINDOWS	458	_____OFFICE DRAFTING TABLE, equipped w/ Vemco tools and accessories
442	_____WOODEN SHOP TABLE WITH OFFICE EQUIPMENT, OFFICE DECOR AND ACCESSORIES	459	_____OFFICE WORK TABLE, c/w (4) chairs and assorted office equipment
443	_____RICOH FW750 LARGE FORMAT COPIER-PRINTER	460	_____RICOH ATICIO 240W WIDE FORMAT COPIER-PRINTER, c/w Acer computer and monitor, desk and accessories
444	_____SAVIN 9935DP OFFICE COPIER	461	_____PORTABLE BLUEPRINT SHAKER TABLE

Equipment removal date: Monday, Nov. 11, 2013

# REAL ESTATE AUCTION TERMS OF SALE

Meekins Auction Company - Meeting the needs and expectations of its customers for over 50 Years



## ***REAL ESTATE PROPERTY DETAILS***

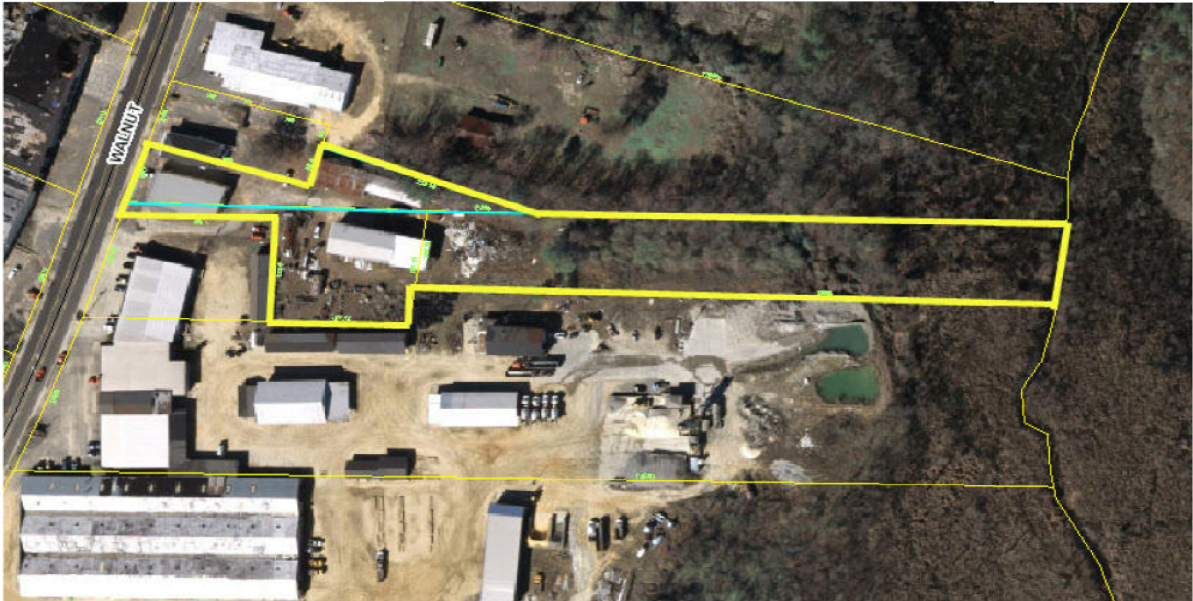
- **REAL PROPERTY** is located in Robeson County on 710 North Walnut Street, Fairmont, NC 28340
- **LEGAL DESCRIPTION:** 3.85 Acres and Buildings
- **PIN NUMBER:** 3002-01-01901, 3002-01-018 & 3002-01-017, Deed Book 636 at Page 530
- **BUYERS PREMIUM:** 10 percent
- **PAYMENT TERMS:** 10% down payment on day of auction and remaining balance within 30 days.
- **PROPERTY TO BE SOLD AT RESERVED AUCTION:** The real estate will be sold at reserved auction, contingent upon seller's acceptance of selling price.
- **ADDITIONAL INFORMATION**
  - **General Details:** Approximately 3.85 acres with office and shop-warehouse buildings, located in city limits, road frontage
  - **Building 1:** 2500 sq ft Office Building with attached shop/warehouse. Office Space includes (5) offices, kitchen/break room, conference room, front lobby waiting room, (2) half baths, (3) storage rooms, plans drafting room. Type of Construction: Masonry Construction. The attached Warehouse portion of the building consists of 1500 sq ft and has three phase power for shop needs.
  - **Building 2:** 40 ft x 80 ft all steel construction Warehouse Storage Building, includes an 12 ft x 60 ft mezzanine, roll up garage bay door, 40 ft x 40 ft attached storage utility shelter
  - **Building 3:** 30 ft x 80 ft all steel construction Warehouse Storage Building, includes an 12 ft x 75 ft attached storage utility shelter

### **Auction Conducted By:**

Lloyd Meekins & Sons Realty and Auction Company  
4070 NC Hwy 211 East, Lumberton, NC 28358  
Office: 910.739.0547 - Fax: 910.738.1389  
NC Firm License #858 - North Carolina Real Estate License #186605  
Broker-In-Charge: Lloyd Meekins, Jr.

# REAL ESTATE AUCTION PROPERTY PICTURES

Meekins Auction Company - Meeting the needs and expectations of its customers for over 50 Years





# REAL ESTATE AUCTION PROPERTY PICTURES

Meekins Auction Company - Meeting the needs and expectations of its customers for over 50 Years



# REAL ESTATE AUCTION PROPERTY PICTURES

Meekins Auction Company - Meeting the needs and expectations of its customers for over 50 Years





# REAL ESTATE AUCTION PROPERTY PICTURES

Meekins Auction Company - Meeting the needs and expectations of its customers for over 50 Years



**Lloyd  
Meekins  
& Sons  
Auction Co.**

## ***YEAR OF MANUFACTURE - MOTOR VEHICLES INFO***

If a Motor Vehicle was built in the year 1980 or later and has a 17-digit vehicle identification number; the year of manufacture is identified by the 10<sup>th</sup> digit from the left, using the chart provided below.

A	1980	N	1992	4	2004
B	1981	P	1993	5	2005
C	1982	R	1994	6	2006
D	1983	S	1995	7	2007
E	1984	T	1996	8	2008
F	1985	V	1997	9	2009
G	1986	W	1998	A	2010
H	1987	X	1999	B	2011
J	1988	Y	2000	C	2012
K	1989	1	2001	D	2013
L	1990	2	2002	E	2014
M	1991	3	2003		

### ***NOTES***

---

---

---

---

---

---

---

[illegible]



**Lloyd  
Meekins  
& Sons  
Auction Co.**

**Auction Co.  
& Sons**