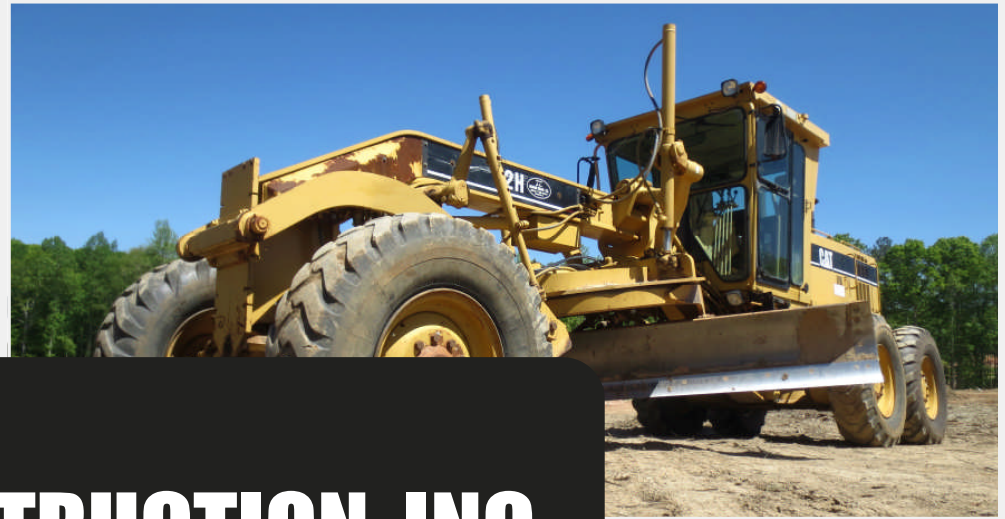




**Lloyd  
Meekins  
& Sons  
Auction Co.**

# LISTING CATALOG



**ABSOLUTE AUCTION**  
FEATURING EQUIPMENT & TRUCKS FROM

## **SELCO CONSTRUCTION, INC**

**THURSDAY, MAY 21, 2015 - 9:00 AM START**  
**SMITHFIELD, NORTH CAROLINA**



**SALE SITE ADDRESS**  
**4083 WILSONS MILLS ROAD**  
**SMITHFIELD, NORTH CAROLINA 27577**

**Auction Conducted By:**  
**Lloyd Meekins & Sons Auction Company**  
Tel: 910.739.0547 Fax: 910.738.1389  
Email: [info@meekinsauction.com](mailto:info@meekinsauction.com)

# AUCTION TERMS OF BIDDING AND SALE

ABSOLUTE AUCTION FEATURING EQUIPMENT AND TRUCKS FROM

## SELCO CONSTRUCTION, INC.

THURSDAY, MAY 21, 2015 ▪ SMITHFIELD, NORTH CAROLINA



### PAYMENT TERMS

All payments are made in US funds. Methods of payment are cash, wire transfer, certified check, or company/personal check accompanied with bank letter guaranteeing payment.

- **ADMINISTRATIVE FEE:** There will be **NO BUYERS PREMIUM/ADMINISTRATIVE FEE** charged on this auction.
- **SALES TAX:** There will be **NO SALES TAX** charged on this auction on items belonging to SELCO CONSTRUCTION INC. All third party consignments will be subject to state and local tax law. The North Carolina Sales Tax (Johnson County) is **6.75%** and applies to all sales, unless proper tax exemption forms are completed.
- **SALES TAX EXEMPTIONS:** Buyers qualifying for sales tax exemption must present a copy of their sales tax I.D. numbers and complete a NC certificate of exemption (E595-E), or have a current exemption form on file, in order to be exempted from sales tax on applicable purchases.
- **EXPORT SALES TAX EXEMPTIONS:** Buyers purchasing for export must complete/execute a NC affidavit of export (E599-C) for sales tax exemption. Items will not be released until this required document is received.

### EVERY ITEM IS SOLD AS-IS, WHERE IS. ALL SALES ARE FINAL

**NOTICE:** All bidders attending/participating in this auction agree that they have read and have full knowledge of these terms and agree to be bound thereby.

Based on information gathered from consignors and other reliable sources, we believe information to be correct and valid, but the accuracy is not guaranteed or warranted by Meekins Auction Company. Please inspect equipment.

**No Guarantees or warranties expressed or implied. This catalog is only a guide.**  
**Meekins Auction Company does not guarantee year models, descriptions, serial numbers or VIN numbers.**

**Please inspect equipment. \*\*\*note: please inspect hour meters and odometer readings for information pertaining to majority of these auction items, hours and miles were recorded between May 5<sup>th</sup> through May 7<sup>th</sup>**

### ADDITIONAL TERMS:

- **In the event of when (2) ring men claim they have the winning bid,** and the auctioneer has declared the item sold, the Auctioneer reserves the right to re-open the bidding to all bidders. Auctioneer reserves the right to choose the increment of the bidding and reject any bids if he feels it is in the best interest of the Seller.
- If a bid is made **“while the hammer is falling”** in acceptance of a prior bid, the auctioneer may reopen the bidding or declare the goods sold under the bid on which the hammer was falling.
- A **“Late Bid”** is not an accepted bid once the auctioneer has declared the item sold.

# AUCTION TERMS OF BIDDING AND SALE

ABSOLUTE AUCTION FEATURING EQUIPMENT AND TRUCKS FROM

## **SELCO CONSTRUCTION, INC.**

THURSDAY, MAY 21, 2015 • SMITHFIELD, NORTH CAROLINA



**Lloyd  
Meekins  
& Sons  
Auction Co.**

### **PERSONAL INJURY AND DAMAGE**

Bidder acknowledges responsibility for any personal injury or property damage caused by the bidder, or his agent, and further agrees to hold Meekins Auction Company harmless from any personal injury to himself or his agents and any property damage incurred on auction premises. **All children under the age of 18 are not allowed on sale site.** I release Meekins Auction Company and the Seller from any and all liability connected with the removal and transportation of my purchases and any and all future uses for the equipment purchased here today.

### **VEHICLE TITLE INFORMATION AND REQUIREMENTS**

- **For vehicles 10 years or older, lot item will be exempt from odometer disclosure. Odometer readings will be displayed in listing catalog description but will be unverified due to age of vehicle.**
- **No titles will be given out on the day of the auction unless otherwise stated by the auctioneer.**
- All title-item purchases will be charged a **\$30 TITLE PROCESSING FEE.**
- Auction Company shall provide a title and paperwork to be able to register motor vehicles and /or trailers.
- **Please check your invoice name for accuracy.** All titles will be mailed out by certified mail within ten to fifteen business days after payment has been received.

### **AUCTION COMPANY INFORMATION**

**Lloyd Meekins & Sons Auction Company • NC Firm License #858**

**Office Address:** 4070 NC Hwy 211 East, Lumberton, NC 28358

**Office Phone:** 910.739.0547 • **Office Fax:** 910.738.1389

**Email:** info@meekinsauction.com • **Web:** meekinsauction.com

**Auctioneers:** Lloyd Mickey Meekins, Jr. #228, Lloyd Trey Meekins, III #8137

**Sales Representatives and Sale Site Managers:**

Trey Meekins, 910.258.4383 • Joe Southern, 336.804.2121 • Avery Brewer, 910.608.9457

**Agency:** The auctioneer is acting as agent only and is not responsible for the acts of its principals or consignors.

**Note:** The Auctioneer may add other terms and conditions of sale, such as additional terms, change in item description, etc. to be announced prior or during the auction.

# AUCTION TERMS OF BIDDING AND SALE

ABSOLUTE AUCTION FEATURING EQUIPMENT AND TRUCKS FROM

## **SELCO CONSTRUCTION, INC.**

THURSDAY, MAY 21, 2015 ▪ SMITHFIELD, NORTH CAROLINA



### **EQUIPMENT REMOVAL INFORMATION**

All equipment must be removed from sale site by **THURSDAY, MAY 28, 2015**

Equipment not removed by designated date, buyer may be charged storage fees. Removal of equipment and insurance is the buyers' responsibility.

#### **Auction Day Equipment Loading Procedure Important Notice**

- To insure the safety of our valued customers and employees, equipment may not be loaded or driven out until the conclusion of the auction or until auction management determines it is safe to do so.
- Meekins Auction Company employees will not load equipment into containers, dismantle machines, arrange for 3<sup>rd</sup> parties to assist in loading equipment, and will not load or operate loaders after dusk.
- **Office Yard Loading Hours:** Monday - Friday, 8:00 am – 12:00 Noon, 1:00 pm – 4:30 pm, Closed Weekends
- **Special Note:** Office and Yard will be closed on Monday, May 25<sup>th</sup> in observance of Memorial Day
- For equipment release, invoice must be paid in full. An equipment release form can be obtained from the main office for removal.

### **EQUIPMENT HAULING COMPANIES**

- **Yarborough Transport Company:** 800.334.0160
- **Rocky Top Trucking Inc:** 800.243.3403
- **Bugg's Transporting Service:** 910.740.4915
- **Landstar (TLC) Hauling Company:** 888.558.0008 (Nationwide Availability)
- **Triple A Transport (Conex/Storage Container Removal):** 910.483.8818
- **Global Relogistics Inc (International):** 877.945.2189 Ext #314
- **C & C Towing and Hauling Services:** 910.739.5455
- **Mangum's Heavy Equip Hauling:** 800.869.8973
- **Joshua Transport:** 360.690.8288
- **Bent Creek Transport:** 919.427.7648

4070 NC Hwy 211 E  
LUMBERTON, NC 28358  
(910) 739-0547  
www.meekinsauction.com

Printed:05/20/2015 17:41

## Catalog for Auction:SELCO CONSTRUCTION, INC. SMITHFIELD

This catalogue is meant merely as a guide. The auctioneer does not warrant the genuineness,  
accuracy or count of any items described herein.

Lot#	Description	Lot#	Description
1	Central Machinery 8" Bench Grinder ***note: sales tax applies***	20	Central Hydraulics Air Hydraulic Pump ***note: sales tax applies***
2	Chicago Electric Jigsaw ***note: sales tax applies***	21	Chicago 1/2" Electric Impact Wrench ***note: sales tax applies***
3	Chicago 7" Polisher w/Digital RPM Display ***note: sales tax applies***	22	Chicago 1/2" Electric Impact Wrench ***note: sales tax applies***
4	Drill Master 7" Variable Speed Polisher ***note: sales tax applies***	23	Chicago 1/2" Electric Impact Wrench ***note: sales tax applies***
5	Chicago 9" Heavy Duty Angle Grinder ***note: sales tax applies***	24	Chicago Variable Speed Rotary Hammer ***note: sales tax applies***
6	Drill Master 1500 watt Heat Gun ***note: sales tax applies***	25	Chicago Variable Speed Rotary Hammer ***note: sales tax applies***
7	Chicago 1600 watt Heavy Duty Heat Gun ***note: sales tax applies***	26	Chicago 7 1/4 Circular Saw with Laser ***note: sales tax applies***
8	Bunker Hill LED Solar Security Light ***note: sales tax applies***	27	Haulmaster 2,000lb Top Wind Trailer Jack ***note: sales tax applies***
9	Chicago Double Cut Saw	28	Centech 6 Volt/12 Volt Battery Load Tester ***note: sales tax applies***
10	Chicago Double Cut Saw	29	Pittsburgh Super Heavy Duty Long Ram Hydraulic Jack ***note: sales tax applies***
11	Chicago 3x21 Belt Sander	30	Chicago 9.6 Volt Cordless Variable Speed Rotary Tool Kit ***note: sales tax applies***
12	Chicago 3x21 Belt Sander	31	Ship & Shore Electric Meat Grinder ***note: sales tax applies***
13	Central Pneumatic 1/2" Air Impact Wrench	32	Cen-tech 10/2/50 Amp 12 Volt Battery Charger ***note: sales tax applies***
14	Chicago 12 Volt Lithium-10N Oscillating Power Tool	33	Cen-Tech 2/6 Amp 12 Volt Battery Charger ***note: sales tax applies***
15	Chicago Auto Darkening Welding Helmet	34	Central Pneumatic 3 Gallon 100 psi Air Compressor ***note: sales tax applies***
16	Chicago 7.5 amp Reciprocating Saw	35	Chicago Portable Variable Speed Band Saw ***note: sales tax applies***
17	Pittsburgh Motorized Rotary Laser Level Kit		
18	Luminar 1000 Watt 120 Volt Twin Lamp Halogen Shop Light		
19	Luminar 1000 Watt 120 Volt Twin Lamp Halogen Shop Light		

**THANK YOU FOR ATTENDING OUR AUCTION SALE**

4070 NC Hwy 211 E  
LUMBERTON, NC 28358

Printed:05/20/2015 17:41

(910) 739-0547

www.meekinsauction.com

Catalog for Auction:SELCO CONSTRUCTION, INC. SMITHFIELD

Lot#	Description	Lot#	Description
36	_____Pittsburgh 3 CFM Two Stage Vacuum Pump ***note: sales tax applies***	53	_____Cen-Tech Heavy Duty 6/12 Volt Charger ***note: sales tax applies***
37	_____Cen-Tech 4-n-1 Powerpack Jump Start ***note: sales tax applies***	54	_____Cen-Tech Heavy Duty 6/12 Volt Charger ***note: sales tax applies***
38	_____Cen-Tech 5-n-1 Power Pack Jump Start ***note: sales tax applies***	55	_____Cen-Tech Heavy Duty 6/12 Volt Charger ***note: sales tax applies***
39	_____Chicago 14" Cuttin Saw ***note: sales tax applies***	56	_____Central Pneumatic 5 Gallon Portable Air Tank ***note: sales tax applies***
40	_____Central Pneumatic 12 GPM Air Operated Pump ***note: sales tax applies***	57	_____Central Machinery 10" 12-speed Bench Drill Press ***note: sales tax applies***
41	_____Chicago 7" Portable Wet Tile Saw ***note: sales tax applies***	58	_____15 amp Heavy Duty Professional Breaker Hammer ***note: sales tax applies***
42	_____Central Machinery 4x36"x6" Belt & Disc Sander ***note: sales tax applies***	59	_____Chicago 10" Sliding Compound Miter Saw ***note: sales tax applies***
43	_____Haul Master 1300lb Remote Controlled Hoist ***note: sales tax applies***	60	_____Pittsburgh 20,000lb Heavy Duty Hydraulic Porter Power ***note: sales tax applies***
44	_____Chicago 10" Sliding Compound Miter Saw w/Laser Guide ***note: sales tax applies***	61	_____2002 CHEVROLET S10 EXTENDED CAB PICKUP, sn:1GCCS19W728168792, equipped w/ Vortec 4.3L V6 engine, automatic transmission, cruise, cloth interior, strobe light package, short bed, Delta 52 gallon off road fuel tank with Fill-Rite 15 GPM electric pump, hose and nozzle, aluminum tool box, odometer reading: 214,079 miles
45	_____Central Pneumatic 1.5 Hp, 6 Gallon, 150psi Air Compressor ***note: sales tax applies***	62	_____1995 TOYOTA TACOMA EXTENDED CAB (4X4) PICKUP, sn:4TAVN73F7SZ069293, equipped w/ V6 3.4L engine, automatic transmission, cruise, cloth interior, short bed, liner, Delta tool box, tow hitch, odometer reading: 238,932 miles
46	_____Central Pneumatic 1.5 Hp, 6 Gallon, 150psi Air Compressor ***note: sales tax applies***	63	_____1997 CHEVROLET C2500 EXTENDED CAB PICKUP, sn:1GCGC29R8VE173388, equipped w/ Vortec 5.7L V8 engine, automatic transmission, cruise, long bed, aluminum tool box, tow package, odometer reading: 217,186 miles
47	_____450/900 Watt Oscillating Portable Heater ***note: sales tax applies***		
48	_____1500 Watt Wood Stove Style Electric Heater ***note: sales tax applies***		
49	_____1500 Watt Wood Stove Style Electric Heater ***note: sales tax applies***		
50	_____Cen-Tech 4-n-1 Power Pack Jump Start ***note: sales tax applies***		
51	_____Cen-Tech 4-n-1 Power Pack Jump Start ***note: sales tax applies***		
52	_____Cen-Tech 4-n-1 Power Pack Jump Start ***note: sales tax applies***		

THANK YOU FOR ATTENDING OUR AUCTION SALE



4070 NC Hwy 211 E  
LUMBERTON, NC 28358  
(910) 739-0547  
www.meekinsauction.com

Printed:05/20/2015 17:41

## Catalog for Auction:SELCO CONSTRUCTION, INC. SMITHFIELD

Lot#	Description	Lot#	Description
64	1997 CHEVROLET C2500 EXTENDED CAB PICKUP, sn:1GCGC29R6VE229442, equipped w/ Vortec 5.7L V8 engine, automatic transmission, cruise, long bed, aluminum tool box, tow hitch, odometer reading: 267,605 miles	71	2014 CHEVROLET SILVERADO 1500 LTZ CREW CAB (4X4) PICKUP, sn:3GCUKSEC9EG183282, equipped w/ Vortec 5.3L V8 flex fuel engine, automatic transmission, cruise, leather grain interior, heated seats, power windows and locks, Bose sound system, short bed, Kobalt aluminum tool box, tow package, odometer reading: 67,109 miles
65	2004 CHEVROLET SILVERADO LS 1500 PICKUP, sn:1GCEC14V84Z216947, equipped w/ Vortec 4.8L V8 engine, automatic transmission, cruise, power windows and locks, cloth interior, long bed, tow package, odometer reading: 343,450 miles	72	2013 CHEVROLET SILVERADO 1500 LS EXTENDED CAB (4X4) PICKUP, sn:1GCRKREA5DZ121373, equipped w/ Vortec 4.8L V8 flex fuel engine, automatic transmission, cruise, cloth interior, power windows and locks, short bed, UWS aluminum tool box, tow package, odometer reading: 73,171 miles
66	1999 CHEVROLET SILVERADO 1500 PICKUP, sn:1GCEC14V5XE236780, equipped w/ Vortec 4.8L V8 engine, automatic transmission, cruise, long bed, TSC Seal-Tite aluminum tool box, odometer reading: 296,387 miles	73	2011 CHEVROLET SILVERADO 1500 LS CREW CAB (4X4) PICKUP, sn:3GCPKPE3XBG389491, equipped w/ Vortec 5.3L V8 flex fuel engine, automatic transmission, cruise, power windows and locks, cloth interior, short bed, liner, tow package, odometer reading: 92,689 miles
67	2004 CHEVROLET SILVERADO LS 1500 PICKUP, sn:1GCEC14V74Z217717, equipped w/ Vortec 4.8L V8 engine, automatic transmission, cruise, power windows and locks, long bed, tow package, odometer reading: 262,325 miles	74	2005 CHEVROLET SILVERADO 1500 LS CREW CAB PICKUP, sn:2GCEC13T151120829, equipped w/ Vortec 5.3L V8 engine, automatic transmission, cruise, cloth interior, power windows and locks, strobe light package, short bed, liner, aluminum tool box, tow package, odometer reading: 187,883 miles
68	2000 CHEVROLET SILVERADO 1500 PICKUP, sn:1GCEC14VXYE311460, equipped w/ Vortec 4.8L V8 engine, automatic transmission, cruise, long bed, tow package, odometer reading: 355,641 miles	75	2002 GMC SIERRA 1500 PICKUP, sn:1GTEC14V42Z278133, equipped w/ Vortec 4.8L V8 engine, automatic transmission, cruise, cloth interior, long bed, tool box, tow package, odometer reading: 256,028 miles
69	2002 CHEVROLET SILVERADO LS 1500 PICKUP, sn:1GCEC14V32Z133312, equipped w/ Vortec 4.8L V8 engine, automatic transmission, cruise, power windows and locks, cloth interior, long bed, odometer reading: 325,895 miles	76	2006 CHEVROLET SILVERADO 1500 LS (4X4) PICKUP, sn:1GECK14V56E229670, equipped w/ Vortec 4.8L V8 engine, automatic transmission, cruise, long bed, UWS aluminum tool box, tow package, odometer reading: 279,445 miles
70	2005 DODGE RAM 2500 HEAVY DUTY SERIES CREW CAB PICKUP, sn:3D7KR28D85G857192, equipped w/ Hemi 5.7L V8 engine, automatic transmission, cruise, long bed, tow package, odometer reading: 173,357 miles		

THANK YOU FOR ATTENDING OUR AUCTION SALE

4070 NC Hwy 211 E  
LUMBERTON, NC 28358  
(910) 739-0547  
www.meekinsauction.com

Printed:05/20/2015 17:41

## Catalog for Auction:SELCO CONSTRUCTION, INC. SMITHFIELD

Lot#	Description	Lot#	Description
77	2006 CHEVROLET SILVERADO 1500 LS (4X4) PICKUP, sn:1GECK14V16E229715, equipped w/ Vortec 4.8L V8 engine, automatic transmission, cruise, long bed, UWS aluminum tool box, tow package, odometer reading: 282,636 miles	83	2005 FORD F-150XLT EXTENDED CAB (4X4) PICKUP, sn:1FTRX14WX5NA17468, equipped w/ Triton 4.6L V8 engine, automatic transmission, cruise, cloth interior, power windows and locks, short bed, liner, Kobalt aluminum tool box, tow package, odometer reading: 238,733 miles
78	2005 CHEVROLET SILVERADO 1500 PICKUP, sn:1GCEC14V15Z299414, equipped w/ Vortec 4.8L V8 engine, automatic transmission, cruise, long bed, Leonard aluminum tool box, tow package, odometer reading: 248,028 miles	84	2004 FORD F-150XLT EXTENDED CAB (4X4) PICKUP, sn:1FTRX14W14NC20456, equipped w/ Triton 4.6L V8 engine, automatic transmission, cruise, cloth interior, power windows and locks, short bed, liner, Kobalt aluminum tool box, tow package, odometer reading: 243,458 miles
79	2013 FORD F-150 STX EXTENDED CAB (4X4) PICKUP, sn:1FTFX1EFXDKF75855, equipped w/ 5.0L V8 flex fuel engine, automatic transmission, cruise, cloth interior, power windows and locks, short bed, aluminum tool box, tow package, odometer reading: 37,740 miles	85	2005 FORD F-150XL EXTENDED CAB PICKUP, sn:1FTRX12W65NA47747, equipped w/ Triton 4.6L V8 engine, automatic transmission, cruise, cloth interior, power windows and locks, short bed, liner, tool box, tow package, odometer reading: 173,518 miles
80	2006 FORD F-350XL SUPERDUTY CREW CAB PICKUP, sn:1FTWW30586EC20603, equipped w/ Powerstroke 6.4L V8 turbo diesel engine, automatic transmission, cruise, long bed, Delta 100 gallon off road fuel tank with GPI electric pump, hose and nozzle, aluminum tool box, tow package, odometer reading: 262,927 miles	86	2004 FORD F-150XL EXTENDED CAB PICKUP, sn:1FTRF12W34NB27136, equipped w/ Triton 4.6L V8 engine, automatic transmission, strobe light package, long bed, aluminum tool box, tow package
81	2003 FORD F-250XL SUPERDUTY CREW CAB PICKUP, sn:1FTNW20F53EA34849, equipped w/ Powerstroke 7.3L V8 diesel engine, automatic transmission, cruise, long bed, liner, off road fuel tank, aluminum tool box, tow package, odometer reading: 195,557 miles	87	2004 FORD F-150XL PICKUP, sn:2FTRF17W74CA96987, equipped w/ Triton V8 engine, automatic transmission, long bed, Better Built aluminum tool box, Heritage series, odometer reading: 158,565 miles
82	2006 FORD F-250XL SUPERDUTY CREW CAB PICKUP, sn:1FTSW20556EA43484, equipped w/ Triton 5.4L V8 engine, automatic transmission, cruise, long bed, tow package, odometer reading: 142,155 miles	88	2000 FORD F-150XL PICKUP, sn:1FTRF17W8YNC23018, equipped w/ Triton V8 engine, automatic transmission, long bed, tow package
		89	2004 FORD F-150XL EXTENDED CAB PICKUP, sn:2FTRX17W64CA98369, equipped w/ Triton V8 engine, automatic transmission, cruise, cloth interior, short bed, tow package, odometer reading: 265,166 miles

THANK YOU FOR ATTENDING OUR AUCTION SALE



4070 NC Hwy 211 E  
LUMBERTON, NC 28358

Printed:05/20/2015 17:41

(910) 739-0547

www.meekinsauction.com

## Catalog for Auction:SELCO CONSTRUCTION, INC. SMITHFIELD

Lot#	Description	Lot#	Description
91	2001 GMC SAFARI COMMERCIAL CARGO VAN, sn:1GTDM19W01B513886, equipped w/ Vortec 4.3L V6 engine, automatic transmission, cruise, power windows and locks, odometer reading: 394,925 miles	97	2002 FORD EXPLORER XLT SPORT UTILITY VEHICLE, sn:1FMDU63W92UC17160, equipped w/ 4.6L V8 engine, automatic transmission, cruise, power windows and locks, leather interior, cargo rack, tow package, odometer reading: 255,132 miles
92	1979 MERCURY COUGAR CLASSIC COUPE AUTOMOBILE, sn:9H93H672298 equipped w/ 351 V8 gas engine, automatic transmission, Edelbrock automotive accessories, power windows and locks, grain leather interior	98	2003 GMC C6500 MECHANICS TRUCK, sn:1GDJ6J1C13F515670, equipped w/ Cat 3126 (330HP) engine, Allison automatic transmission, cruise, power windows and locks, 8,000LB front axle, 17,950LB rear axle, Knapheide 11 ft service tool body, Auto Crane 5005H (5,000LB) hydraulic service crane with wired remote, two outriggers, Miller Bobcat 225NT Welder 8500 Watt Generator (72 hrs), Power Train air compressor, hose and reel, Olympia 6 inch vise, tow package, odometer reading: 183,502 miles
93	2012 CHEVROLET SUBURBAN LTZ (4WD) SPORT UTILITY VEHICLE, sn:1GNSKKE74CR326864, equipped w/ Vortec 5.3L V8 flex fuel engine, automatic transmission, cruise, leather grain interior, air condition and heated seats, middle row captain chair seating, entertainment package, sunroof, cargo rack, tow package, odometer reading: 63,604 miles	99	2001 FORD F-550XLT SUPERDUTY DUALY MECHANICS TRUCK, sn:1FDAF56F81EC16691, equipped w/ Powerstroke 7.3L V8 diesel engine, 6 speed manual transmission, cruise, power windows and locks, cloth interior, 165 wheel base, Auto Crane 11 ft service tool body with Auto Crane 6006 model series service crane, (2) stabilizers, Ingersoll-Rand air compressor, Lincoln Electric Welder Generator set, rear work platform with Columbian 3060 model vise, tow package, odometer reading: 253,688 miles
94	2003 CHEVROLET TAHOE LT (4WD) SPORT UTILITY VEHICLE, sn:1GNEK13Z43R177058, equipped w/ Vortec 5.3L V8 engine, automatic transmission, cruise, leather interior, power windows and locks, sunroof, Bose sound system, cargo rack, tow package, odometer reading: 157,419 miles	100	2013 CHEVROLET SILVERADO 3500HD CREW CAB DUALY SERVICE TRUCK, sn:1GB4CZC84DF233711, equipped w/ Duramax 6.6L turbo diesel engine, Allison automatic transmission, cruise, 2wd, power windows and locks, Knapheide 9 ft service tool body, cargo utility rack, tow package, odometer reading: 18,087 miles
95	2007 CHEVROLET TRAILBLAZER LS SPORT UTILITY VEHICLE, sn:1GNDS13S272143147, equipped w/ Vortec 4.2L V6 engine, automatic transmission, cruise, power windows and locks, cloth interior, cargo rack, tow package, odometer reading: 258,752 miles		
96	2005 CHEVROLET TRAILBLAZER SPORT UTILITY VEHICLE, sn:1GNDS13S652302068, equipped w/ Vortec 4.2L V6 engine, automatic transmission, cruise, power windows and locks, cloth interior, cargo rack, tow package, odometer reading: 314,084 miles		

THANK YOU FOR ATTENDING OUR AUCTION SALE

4070 NC Hwy 211 E  
LUMBERTON, NC 28358  
(910) 739-0547  
www.meekinsauction.com

Printed:05/20/2015 17:41

## Catalog for Auction:SELCO CONSTRUCTION, INC. SMITHFIELD

Lot#	Description	Lot#	Description
101	2013 CHEVROLET SILVERADO 3500HD CREW CAB DUALY SERVICE TRUCK, sn:1GB4CZC84DF233465, equipped w/ Duramax 6.6L turbo diesel engine, Allison automatic transmission, cruise, 2wd, power windows and locks, Knapheide 9 ft service tool body, cargo utility rack, tow package, odometer reading: 29,385 miles	106	1996 MACK CH613 (TRI-AXLE) DAY CAB TRUCK TRACTOR, sn:1M2AA18Y5TW064145, equipped w/ E7-427HP Mack engine, Eaton Fuller 10 speed transmission, cruise, fifth wheel slide, work light package, 12,000LB front axle, 40,000LB rear axles, Hendrickson air lift third axle, camelback rear suspension, Merritt aluminum headache rack, hydraulic wet line kit, one owner truck, odometer reading: 291,799 miles, 10,539 engine hrs
102	2006 CHEVROLET SILVERADO 2500HD SERVICE TRUCK, sn:1GBHC24U46E177024, equipped w/ Vortec 6.0L V8 engine, automatic transmission, cruise, 2wd, Knapheide 8 ft service tool body, cargo utility rack, 24.5 cfm gas powered air compressor, welding equipment and accessories, hose and reel, strobe light package, Larin vise, tow package, odometer reading: 207,794 miles	107	2007 PETERBILT 386 (T/A) DAY CAB TRUCK TRACTOR, sn:1XPHDU9X27N691865, equipped w/ Cat C13 (430HP) engine, Eaton Fuller 8LL transmission, cruise, engine brake, fifth wheel slide, differential lock, grain interior, power windows and locks, strobe light package, 12,000LB front axle, 38,000LB rear axles, air ride suspension, ProTech aluminum headache rack, hydraulic wet line kit, odometer reading: 898,061 miles, *note: reconstructed title
103	1997 CHEVROLET 2500 CHEYENNE SERVICE TRUCK, sn:1GBGC24R6VZ206635, equipped w/ Vortec 5.7L V8 engine, automatic transmission, cruise, Knapheide 8 ft service tool body, tow package, odometer reading: 318,164 miles	108	1996 MACK CH613 (T/A) DAY CAB TRUCK TRACTOR, sn:1M2AA18Y1TW058830, equipped w/ E7-427HP Mack engine, Eaton Fuller 10 speed transmission, cruise, engine brake, 12,000LB front axle, 40,000LB rear axles, Reyco spring suspension, strobe light package, hydraulic wet line kit, odometer reading: 343,201 miles
104	1995 INTERNATIONAL 4700 FUEL & LUBE TRUCK, sn:1HTSCAAN3SH657396, equipped w/ DT466 engine, 7 speed transmission, air brakes, 206 wheel base, Rawson-Koenig 14 ft fuel and lube body with (4) product tanks, Balcrank pneumatic pumps, work light package, (2) 40 gallon poly water tanks, Tuthill Fill-Rite fuel meter register, Ingersoll-Rand Twin Cylinder air compressor, hose reels and accessories, odometer reading: 57,672 miles	109	1998 MACK CH613 (T/A) DAY CAB TRUCK TRACTOR, sn:1M1AA13Y7WW084946 equipped w/ Mack E7-375 (375HP) engine, 10 speed transmission, power divider lock, fifth wheel slide, 12,000LB front axle, 40,000LB rear axles, air ride suspension, hydraulic wet line kit, odometer reading: 237,665 miles, 23,255 engine hrs
105	1998 MACK CH613 (TRI-AXLE) DAY CAB TRUCK TRACTOR, sn:1M2AA18Y1VW078269, equipped w/ E7-427HP Mack engine, Eaton Fuller 10 speed transmission, cruise, engine brake, 12,000LB front axle, 40,000LB rear axles, Granning air lift steerable third axle, air ride suspension, Merritt aluminum headache rack, strobe light package, hydraulic wet line kit, odometer reading: 858,205 miles		

THANK YOU FOR ATTENDING OUR AUCTION SALE

4070 NC Hwy 211 E  
LUMBERTON, NC 28358  
(910) 739-0547  
www.meekinsauction.com

Printed:05/20/2015 17:41

## Catalog for Auction:SELCO CONSTRUCTION, INC. SMITHFIELD

Lot#	Description	Lot#	Description
110	2006 STERLING ACTERRA (T/A) DAY CAB TRUCK TRACTOR, sn:2FWJCHDJ56AW68497, equipped w/ Mercedes-Benz 0M926LA Series (330HP) engine, Eaton Fuller 10 speed transmission, cruise, engine brake, axle and differential lock, fifth wheel slide, power windows and locks, Road Gear aluminum headache rack, 12,000LB front axle, 40,000LB rear axles, air ride suspension, odometer reading: 343,742 miles, 9,461 engine hrs	115	1991 BMY M923A2 5 TON 6X6 MILITARY CARGO TRUCK, sn:2305708, equipped w/ Cummins 6CT turbo engine, Allison automatic transmission, pto, 206 wheel base, gvw rating: 47,500LBS, 14 ft cargo body fold-down side panels, heavy duty spring suspension, pintle hitch, glad hands, 14.00 R 20 military grade tires, odometer reading: 11,357 miles, ***note: No title available with item, offroad use only, sold with bill of sale only
111	1987 FREIGHTLINER FLC64T (T/A) DAY CAB TRUCK TRACTOR, sn:1FUPYSYB1HH308888, equipped w/ Cat 3406 (425HP) engine, Eaton Fuller 13 speed transmission, Jake brake, fifth wheel slide, inter-axle differential lock, 12,000LB front axle, 40,000LB rear axles, spring suspension, hydraulic wet line kit, odometer reading: 573,981 miles ***note: sales tax applies***	116	2004 STERLING LT9513 SERIES (QUAD-AXLE) DUMP TRUCK, sn:2FZHAZCV84AN02974, equipped w/ Mercedes-Benz 0M460LA Series (435HP) engine, Eaton Fuller 8LL transmission, cruise, engine brake, axle and wheel lock, power windows and locks, 18,000LB front axle, 46,000LB rear axles, Watson & Chalin steerable air lift third and fourth pusher axles, Tuf-Trac heavy duty rear spring suspension, OX 19 FT (17-21 YD) steel dump body, electric tarp system, odometer reading: 655,511 miles
112	1983 KENWORTH W900 (T/A) DAY CAB TRUCK TRACTOR, sn:1XKWDL9X9DS312283, equipped w/ Cummins NTC-350 (350HP) engine, 9 speed transmission, 12,000LB front axle, 40,000LB rear axles, Reyco spring suspension, 11R 24.5 tires, hydraulic wet line kit	117	1998 FORD LOUISVILLE LT9513 SERIES (QUAD-AXLE) DUMP TRUCK, sn:1FDYS96T0WVA08352, equipped w/ Cat 3306 10.5L engine, Roadranger 10 speed transmission, cruise, axle and differential lock, 13,220LB front axle, 40,000LB rear axles, steerable air lift third and fourth pusher axles, Hendrickson heavy duty rear spring suspension, OX 17 FT (16-18 YD) steel dump body, electric tarp system, odometer reading: 405,651 miles
113	1972 AM GENERAL M813 5 TON (T/A) DAY CAB TRUCK TRACTOR, sn:NLD8T8C325-11112, equipped w/ Cummins engine power, 5x2 manual transmission, 6-wheel-drive, 206 wheel base, maximum towed load rating: 30,000LBS, heavy duty spring suspension, 11.00-20 military grade tires, odometer reading: 29,215 miles	118	1996 KENWORTH T800 (QUAD-AXLE) DUMP TRUCK, sn:1NKDX5EXXTJ729281, equipped w/ Cummins L10 Series (350HP) engine, Eaton Fuller 10 speed transmission, engine brake, gw rating: 72,000LBS, steerable air lift third and fourth pusher axles, Ravens 19 FT Aluminum dump body, electric tarp system, odometer reading: 881,879 miles, *notes: 10,000 miles on recently installed inframe engine and reconstructed title
114	1990 BMY M925A2 5 TON 6X6 MILITARY CARGO TRUCK, sn:2500413, equipped w/ Cummins 6CT turbo engine, Allison automatic transmission, pto, 206 wheel base, gvw rating: 47,500LBS, front mount 20,000LB hydraulic driven winch, 14 ft cargo body fold-down side panels, heavy duty spring suspension, pintle hitch, glad hands, 14.00 R 20 military grade tires, odometer reading: 9,572 miles, ***note: No title available with item, offroad use only, sold with bill of sale only		

THANK YOU FOR ATTENDING OUR AUCTION SALE

4070 NC Hwy 211 E  
LUMBERTON, NC 28358  
(910) 739-0547  
www.meekinsauction.com

Printed:05/20/2015 17:41

## Catalog for Auction:SELCO CONSTRUCTION, INC. SMITHFIELD

Lot#	Description	Lot#	Description
119	1998 MACK RD694S (T/A) DUMP TRUCK, sn:1M2P331CXWM001167, equipped w/ E7-350HP Mack engine, Eaton Fuller 9 speed transmission, 12,860LB front axle, 38,000LB rear axles, camelback suspension, OX 16 FT (15-17 YD) steel dump body, electric tarp system, one owner truck, odometer reading: 228,971 miles	124	1989 FORD LT8000 (T/A) DUMP TRUCK, sn:1FDYU82A2KVA07027, equipped w/ 7.8L 240HP Ford diesel engine, Eaton Roadranger 13 speed transmission, differential lock, 12,000LB front axle, 40,000LB rear axles, double frame body, Hendrickson spring suspension, 15 FT steel dump body, electric tarp system, pintle hitch ***Title Delay***
120	1998 MACK RD694S (T/A) DUMP TRUCK, sn:1M2P331CXWM001170, equipped w/ E7-350HP Mack engine, Eaton Fuller 9 speed transmission, 12,860LB front axle, 38,000LB rear axles, camelback suspension, OX 16 FT (15-17 YD) steel dump body, electric tarp system, one owner truck, odometer reading: 314,678 miles	125	2007 INTERNATIONAL 4300 (S/A) DUMP TRUCK, sn:1HTMMAAM57H382280, equipped w/ DT466 engine, automatic transmission, cruise, 690 wheel base, gvwr rating: 25,999LBS, spring suspension, 14 ft flatbed dump body, removable side panels, tow hitch, odometer reading: 164,794 miles
121	1994 MACK CH613 (T/A) DUMP TRUCK, sn:1M1AA12Y1RW039622, equipped w/ EM7-300HP Mack engine, 9 speed transmission, cruise, 12,000LB front axle, 38,000LB rear axles, camelback suspension, OX 16 FT (15-17 YD) steel dump body, Donovan electric tarp system	126	2007 INTERNATIONAL 4300 (S/A) DUMP TRUCK, sn:1HTMMAAL77H339597, equipped w/ DT466 engine, automatic transmission, cruise, 690 wheel base, gvwr rating: 25,999LBS, spring suspension, 14 ft flatbed dump body, removable side panels, tow hitch, odometer reading: 260,138 miles
122	2004 STERLING LT9500 SERIES (T/A) DUMP TRUCK, sn:2FZHAZCV84AM20839, equipped w/ Mercedes-Benz MBE4000 series engine, Eaton Roadranger 10 speed transmission, cruise, engine brake, axle and wheel lock, 14,600LB front axle, 40,000LB rear axles, Tuf-Trac suspension, double frame, OX 16 FT (17-19 yd) steel dump body, electric tarp system, odometer reading: 455,623 miles	127	1995 INTERNATIONAL 4700 CREW CAB DUMP TRUCK, sn:1HTSCABLISH637998, equipped w/ T444E diesel engine, Spicer Double Duty D 5x2 manual transmission, cruise, 176 wheel base, 8,000LB front axle, 17,500LB rear axle, 10 ft steel dump body, electric tarp system, tow package, odometer reading: 128,016 miles
123	1998 FORD LT9513 LOUISVILLE (T/A) DUMP TRUCK, sn:1FDYS96T9WVA12335, equipped w/ Cat 3306 (300HP) engine, Eaton Fuller 10 speed transmission, cruise, axle and wheel lock, 216 wheel base, 13,220LB front axle, 40,000LB rear axles, Hendrickson heavy duty spring suspension, OX 17 FT (16-19 yd) steel dump body, Roll-Rite electric tarp system, odometer reading: 300,353 miles	128	2001 FORD F-550XL SUPERDUTY CREW CAB DUALY DUMP TRUCK, sn:1FDAW56F31ED80866, equipped w/ Powerstroke 7.3L V8 diesel engine, automatic transmission, 176 wheel base, gvwr rating: 17,500LBS, Knapheide 9 FT electric over hydraulic dump body, removable side panels, tow package, odometer reading: 223,729 miles

THANK YOU FOR ATTENDING OUR AUCTION SALE

4070 NC Hwy 211 E  
LUMBERTON, NC 28358  
(910) 739-0547  
www.meekinsauction.com

Printed:05/20/2015 17:41

## Catalog for Auction:SELCO CONSTRUCTION, INC. SMITHFIELD

Lot#	Description	Lot#	Description
129	2002 EAGER BEAVER 50GSL-PT (TRI-AXLE) LOWBOY TRAILER, sn:112SE251X2L059360, equipped w/ 50 Ton hauling capability, non ground bearing, wet line operation, 102 inch x 24 ft main load deck, All Wheel ABS, Webb Wheel Hubs, deck over wheels, Ridewell air ride suspension, air lift third axle, 255/70R 22.5 tires	135	1968 HEIL 8,500 GALLON WATER TANKER TRAILER, sn:919984, equipped w/ 40 ft aluminum body, max product load rating: 60,000LBS, (5) compartment holding tanks, rear spray bar, storage cabinet and accessories, tandem axle, Reyco spring suspension, 285/75R 24.5 low profile radial tires
130	2000 EAGER BEAVER 50GSL (TRI-AXLE) LOWBOY TRAILER, sn:112SD2488YL054961, equipped w/ 50 Ton hauling capability, non ground bearing, wet line operation, 102 inch x 24 ft main load deck, All Wheel ABS, deck over wheels, air ride suspension, air lift third axle, 255/70R 22.5 tires	136	1997 TRANSCRAFT TL2000 SUPER-BEAM SPREAD AXLE FLATBED TRAILER, sn:1TTF48205V1054667, equipped w/ 102 inch x 48 ft load deck, Aero aluminum headache rack, 45,400LB rear axles, gvw rating: 80,000LBS, Pro-Tech storage chests, tandem spread axle, air ride suspension, 285/75R 24.5 tires ***note: sales tax applies***
131	1986 INTERSTATE DGN35 SERIES LOWBOY TRAILER, sn:JKDGN202GT350007, equipped w/ 35 Ton hauling capability, ground bearing, 96 inch x 20 ft 4 inch load deck, 2 ft dovetail with loading ramps, tandem axle, spring suspension, 10.00-15 tires	137	1992 FONTAINE FTW-5-8048WSAW SPREAD AXLE FLATBED TRAILER, sn:13N148300N1554459, equipped w/ 102 inch x 48 ft load deck, Aero aluminum headache rack, 45,000LB rear axles, gvw rating: 76,562LBS, frame rating: 80,000LBS, Webb wheel hubs, tandem spread axle, air ride suspension, 11R 22.5 tires ***note: sales tax applies***
132	1991 UTILITY VS2R MODEL SERIES CHIP TRAILER, sn:1UYVS2471MM529007, equipped w/ 96 inch x 46 ft body, 108 inch wall height, aluminum composition, mesh roll tarp system, gvw rating: 65,000LBS, barn doors, tandem spread axle, Hendrickson air ride suspension, 275/80R 22.5 tires	138	1991 FONTAINE FTW-4-8048WSAW SPREAD AXLE FLATBED TRAILER, sn:13N148301M1551259, equipped w/ 102 inch x 48 ft load deck, headache rack, 45,000LB rear axles, gvw rating: 76,518LBS, frame rating: 80,000LBS, Webb wheel hubs, tandem spread axle, 285/75R 24.5 tires ***note: sales tax applies***
133	1990 NABORS 42 FT CHIP TRAILER, sn:1NT120425L10X0886, equipped w/ 96 inch x 42 ft body, 108 inch wall height, aluminum composition, mesh roll tarp system, gvw rating: 65,000LBS, barn doors, tandem axle, spring suspension, 11R 24.5 tires	139	FONTAINE FTW-4-8048WSAW SPREAD AXLE FLATBED TRAILER, sn:13N148300M1551253, equipped w/ 102 inch x 48 ft load deck, headache rack, 45,000LB rear axles, gvw rating: 76,518LBS, frame rating: 80,000LBS, tandem spread axle, 295/75R 22.5 tires
134	1994 DORSEY 46 FT CHIP TRAILER, sn:1DTV11W28RA222852, equipped w/ 96 inch x 46 ft body, 108 inch wall height, aluminum composition, mesh roll tarp system, gvw rating: 65,000LBS, swinging gate, tandem axle, spring suspension, adjustable sliding axles, 275/80R 22.5 tires		

THANK YOU FOR ATTENDING OUR AUCTION SALE

4070 NC Hwy 211 E  
LUMBERTON, NC 28358  
(910) 739-0547  
www.meekinsauction.com

Printed:05/20/2015 17:41

## Catalog for Auction:SELCO CONSTRUCTION, INC. SMITHFIELD

Lot#	Description	Lot#	Description
140	FONTAINE F-1-5540SL FLATBED TRAILER, sn:14986, equipped w/ 96 inch x 40 ft load deck, headache rack, removable side panels, 55,000LB rated capacity, tandem axle, spring suspension, 11R 22.5 tires ***note: sales tax applies***	147	1994 READILITE & BARRICADE INC. PORTABLE OFFICE TRAILER, sn:9402087, equipped w/ 8 ft x 16 ft office body, single door entrance, office furniture and accessories included, single axle, 7-14.5MH tires
141	FRUEHAUF DB-FW-44 FLATBED TRAILER, sn:BF002131, equipped w/ 96 inch x 44 ft load deck, headache rack, adjustable sliding axles, spring suspension, 11R 22.5 tires, tandem axle ***note: sales tax applies***	148	1995 BIG BEE CONTRACTOR SERIES JOBSITE UTILITY TRAILER, sn:1BGFM1628SM177440, equipped w/ 7,000LB hauling capability, 6 ft 6 in x 16 ft load deck, wood floor, utility jobsite tools and supplies storage racks, loading tailgate, tandem axle, 205/75R 15 tires
142	1972 MONTONE 22EDT END DUMP TRAILER, sn:72114253, equipped w/ 22 ft aluminum dump body, 52 inch sides, tandem axle, Neway spring suspension, 11R 22.5 tires, comes with additional aluminum tailgate	149	2015 CLAYS TRAILER MFG. CTU16 UTILITY TRAILER, sn:55JBL1621FT000438, equipped w/ 7,000LB hauling capability, 6 ft 4 in x 16 ft load deck, wood floor, tandem axle, ST205/75D 15 tires
143	2005 HARDEEBILT 816EQ6 EQUIPMENT TRAILER, sn:HB9TL163X5X200731, equipped w/ 12,000LB hauling capability, 6 ft 8 in x 14 ft main load deck, wood floor, 2 ft dovetail, loading ramps, tandem axle, LT235/85R 16 tires	150	2015 CLAYS TRAILER MFG. CTU16 UTILITY TRAILER, sn:55JBL1621FT000436, equipped w/ 7,000LB hauling capability, 6 ft 4 in x 16 ft load deck, wood floor, tandem axle, ST205/75D 15 tires
144	2013 TOP LINE TH-18 UTILITY CAR HAULER TRAILER, sn:4UMTH182XDM000220, equipped w/ 7,000LB hauling capability, 6 ft 8 in x 18 ft load deck, wood floor, hide-away loading ramps, tandem axle, ST225/75R 15 tires	151	2015 CLAYS TRAILER MFG. CTU16 UTILITY TRAILER, sn:55JBL1621FT000437, equipped w/ 7,000LB hauling capability, 6 ft 4 in x 16 ft load deck, wood floor, tandem axle, ST205/75D 15 tires
145	2005 LOAD TRAIL 6 TON EQUIPMENT TRAILER, sn:4ZECF202951004134, equipped w/ 83 inch x 18 ft load deck, wood floor, 12,160LBS total hauling capacity rating, 2 ft dovetail with loading ramps, tandem axle, ST235/85R 16 tires	152	2015 CLAYS TRAILER MFG. CTU16 UTILITY TRAILER, sn:55JBL1621FT000435, equipped w/ 7,000LB hauling capability, 6 ft 4 in x 16 ft load deck, wood floor, tandem axle, ST205/75D 15 tires ***note: sales tax applies***
146	2002 DIAMOND C RANGER SERIES EQUIPMENT TRAILER, sn:DCEQ16429, equipped w/ 8,000LB hauling capability, 6 ft 10 in x 16 ft load deck, wood floor, tandem axle, ST225/75D 15 tires	153	2006 HOLMES UT12SA UTILITY TRAILER, sn:5LVBV12146A010897, equipped w/ 4,000LB hauling capability, 6 ft 4 in x 12 ft load deck, wood floor, loading tailgate, single axle, ST205/75D 15 tires
		154	2001 DIAMOND C RANGER RSA SERIES UTILITY TRAILER, sn:DC5X8050, equipped w/ 2,990LB hauling capability, 5 ft x 8 ft load deck, wood floor, water tank accessory, loading tailgate, single axle, ST205/75D 14 tires

THANK YOU FOR ATTENDING OUR AUCTION SALE

4070 NC Hwy 211 E  
LUMBERTON, NC 28358  
(910) 739-0547  
www.meekinsauction.com

Printed:05/20/2015 17:41

## Catalog for Auction:SELCO CONSTRUCTION, INC. SMITHFIELD

Lot#	Description	Lot#	Description
201	1999 CAT 330BL HYDRAULIC EXCAVATOR, sn:6DR03130, equipped w/ Enclosed Cab, Cat 3306 engine, power and work mode selector, long undercarriage, 33.5 inch pads, Cat 60 inch digging bucket, meter reading: 10,581 hrs	209	1999 CAT 315BL HYDRAULIC EXCAVATOR, sn:3AW01591, equipped w/ Cat 3054 engine power, 27.5 inch pads, Geith manual thumb attachment, 36 inch digging bucket, meter reading: 8,926 hrs
202	CAT 42 INCH EXCAVATOR DIGGING BUCKET, sn:88862, fits Cat 330BL model hydraulic excavators	210	2004 KUBOTA KX121-3 HYDRAULIC EXCAVATOR, sn:JKUK1213T01H21501, equipped w/ Rops Canopy, Kubota 2.2L engine, work light package, rubber tracks, backfill dozer blade, plumbed auxiliary hydraulics, C & P 24 inch digging bucket, meter reading: 3,657 hrs
203	GEITH UNIVERSAL MANUAL THUMB EXCAVATOR ATTACHMENT, equipped w/ three tines, mount bracket, fits Cat 330BL size hydraulic excavators	211	KUBOTA 10 INCH EXCAVATOR DIGGING BUCKET, fits Kubota KX121-3 model hydraulic excavators
204	2008 CAT 320DL HYDRAULIC EXCAVATOR, sn:CAT0320DJPHX01558, equipped w/ A/C Cab, Cat C6.4 Acert engine, automatic engine speed control, work light package, 31.5 inch pads, 42 inch digging bucket, meter reading: 5,934 hrs	212	1998 BADGER 1085C CRUZ-AIR (WHEELED) HYDRAULIC EXCAVATOR, sn:980803, equipped w/ A/C Cab, Cummins B5.9-C (148HP) engine, 3 forward/3 reverse transmission, 4WD, work light package, four hydraulic outriggers, plumbed auxiliary hydraulics, 60 inch cleanout bucket with swivel quick coupler, hydraulic thumb attachment, 17.5 R 25 tires, ***note: sales tax applies
205	2005 HITACHI ZX200LC HYDRAULIC EXCAVATOR, sn:HCM1G600T00114469, equipped w/ A/C Cab, Isuzu AA6BGIT series engine, 32 inch pads, Geith manual thumb attachment, 48 inch digging bucket, meter reading: 9,289 hrs	213	2005 CAT 257B SKID STEER LOADER, sn:CAT0257BLSLK03512, equipped w/ A/C Cab, Cat 3024C turbo engine, rubber tracks, work light package, auxiliary hydraulics, 4-n-1 loader bucket, meter reading: 1,172 hrs, ***note: sales tax applies
206	2004 HITACHI ZX200LC HYDRAULIC EXCAVATOR, sn:ARH310333, equipped w/ A/C Cab, Isuzu AA6BGIT series engine, 31.5 inch pads, Geith manual thumb attachment, 48 inch digging bucket, meter reading: 7,343 hrs	214	1997 CAT D5M LGP CRAWLER DOZER, sn:6AS00350, equipped w/ Rops Canopy, Cat 3116 engine, power shift transmission with finger-tip controls, work light package, 30 inch pads, 6 way dozer blade, drawbar hitch, plumbed for hydraulic ripper attachment, meter reading: 8,629 hrs
207	2002 HITACHI ZX200LC HYDRAULIC EXCAVATOR, sn:HCM1G600V00110588, equipped w/ A/C Cab, Isuzu AA6BGIT series engine, 27.5 inch pads, Geith manual thumb attachment, 42 inch digging bucket, meter reading: 8,951 hrs	215	1998 CAT D5M LGP CRAWLER DOZER, sn:3CR00765, equipped w/ Rops Canopy, Cat 3116 engine, power shift transmission with finger-tip controls, rear screen protection, sweeps, 30 inch pads, 6 way dozer blade, drawbar hitch, meter reading: 10,669 hrs
208	1997 HITACHI EX200LC-5 HYDRAULIC EXCAVATOR, sn:14M-81084, equipped w/ Enclosed Cab, Isuzu engine, 31.5 inch pads, 48 inch digging bucket, meter reading: 11,609 hrs		

THANK YOU FOR ATTENDING OUR AUCTION SALE



4070 NC Hwy 211 E  
LUMBERTON, NC 28358  
(910) 739-0547  
www.meekinsauction.com

Printed:05/20/2015 17:41

## Catalog for Auction:SELCO CONSTRUCTION, INC. SMITHFIELD

Lot#	Description	Lot#	Description
216	1997 CAT D5M XL SERIES CRAWLER DOZER, sn:5ES00311, equipped w/ Rops Canopy, Cat 3116 engine, power shift transmission with finger-tip controls, rear and side screen protection, sweeps, 22 inch pads, 6 way dozer blade, drawbar hitch, meter reading: 9,528 hrs	222	1978 CAT 12G MOTOR GRADER, sn:61M5511, equipped w/ Enclosed Cab, Cat 3306 engine, direct drive transmission, full hydraulic controls including hydraulic sideshift and tilt, work light package, push block, 12 ft board, rear hydraulic ripper attachment, 14.00-24 tires, meter reading: 22,672 hrs
217	1998 CAT D5C LGP CRAWLER DOZER, sn:6ZL00962, equipped w/ Rops Canopy, Cat 3046T engine, power shift transmission, rear screen protection, sweeps, 26 inch pads, 6 way dozer blade, meter reading: 8,716 hrs	223	1995 FIATALLIS FG65C MOTOR GRADER, sn:85S05275, equipped w/ Rops Canopy, New Holland 80HP diesel engine, power shift transmission, articulating frame, work light package, hydraulic side shift and tilt, 10 ft board, scarifier, 15-19.5 NHS tires, meter reading: 2,115 hrs, ***note: sales tax applies
218	1993 CAT 963 LGP CRAWLER LOADER, sn:21Z04885, equipped w/ Rops Canopy, Cat 3304 engine, hydrostatic transmission, work light package, 22 inch pads, loader bucket	224	2002 JOHN DEERE 8410 (4WD) TRACTOR, sn:RW8410P014421, equipped w/ A/C Cab, John Deere 6081 8.1L (270HP) engine, power shift transmission, work light package, pto, quad hydraulic remote valve outlets, pull scraper hitch, front weights package, 600/65R 28 front tires, 710/70R 38 rear dual tires, meter reading: 8,103 hrs
219	CRAWLER TRACTOR ROOT RAKE ATTACHMENT, equipped w/ 9 ft working width, fits Cat D5M LGP size crawler dozers		
219A	1998 CAT 12H MOTOR GRADER, sn:4XM01626, equipped w/ A/C Cab, Cat 3306 engine, direct drive power shift transmission, work light package, articulating frame, 12 ft board, scarifier, 14.00-24 tires, meter reading: 10,522 hrs	224A	ICON 15D LANDREFORM SERIES PULL SCRAPER, sn:6001, equipped w/ 15 cu yd hauling capability, swing wall ejector series, (4) Michelin 20.5 R 25 tires
220	1989 CAT 140G MOTOR GRADER, sn:72V12172, equipped w/ Enclosed Cab, Cat 3306 engine, direct drive power shift transmission, full hydraulic controls, work light package, articulating frame, 12 ft board, 14.00-24TG tires	225	1996 JOHN DEERE 8400 (4WD) TRACTOR, sn:RW8400P007332, equipped w/ A/C Cab, John Deere 8.1L 6 cyl (252HP) engine, power shift transmission, work light package, three point quick hitch, pto, quad hydraulic remote valve outlets, pull scraper hitch, front weights package, 600/65R 28 front tires, 710/70R 38 rear dual tires, meter reading: 9,154 hrs
221	1987 CAT 140G MOTOR GRADER, sn:72V10877, equipped w/ Enclosed Cab, Cat 3306 engine, direct drive power shift transmission, full hydraulic controls, work light package, articulating frame, 14 ft board, 14.00-24TG tires	225A	CEPCO SP14M PULL SCRAPER, sn:SP14M0000054, equipped w/ 14 cu yd hauling capability, rear hydraulic remote valve outlets, (6) 13.00-24TG tires

THANK YOU FOR ATTENDING OUR AUCTION SALE

4070 NC Hwy 211 E  
LUMBERTON, NC 28358  
(910) 739-0547  
www.meekinsauction.com

Printed:05/20/2015 17:42

## Catalog for Auction:SELCO CONSTRUCTION, INC. SMITHFIELD

Lot#	Description	Lot#	Description
226	1997 CAT IT28G WHEEL LOADER, sn:8CR00478, equipped w/ A/C Cab, Cat 3116 engine, power shift transmission with autoshift, ride control, work light package, hydraulic IT quick coupler system with quick attach loader bucket and pallet forks, 20.5-25 tires, meter reading: 2,794 hrs	232	1997 CAT 416C (4X4) LOADER BACKHOE, sn:1WR01355, equipped w/ Rops Canopy, Cat 3054 turbo engine, work light package, hydraulic IT quick coupler attachment, 4-n-1 loader bucket, standard stick, 30 inch hoe bucket
227	1982 CAT 930 WHEEL LOADER, sn:41K11363, equipped w/ Enclosed Cab, Cat 330 (100HP) engine, power shift transmission, work light package, Rome quick coupler, Balderson pallet forks and loader bucket, 17.5-25 tires	233	CAT 48 INCH QUICK ATTACH PALLET FORKS ATTACHMENT, fits IT Loader Backhoes/Wheel Loaders
		234	CAT 48 INCH QUICK ATTACH PALLET FORKS ATTACHMENT, fits IT Loader Backhoes/Wheel Loaders
228	2005 CAT 420D IT (4X4) LOADER BACKHOE, sn:CAT0420DHBLN11463, equipped w/ Rops Canopy, Cat 3054 turbo engine, power shuttle transmission, work light package, hydraulic IT quick coupler system, 4-n-1 loader bucket, standard stick, 24 inch hoe bucket, meter reading: 3,387 hrs	235	CAT 48 INCH QUICK ATTACH PALLET FORKS ATTACHMENT, fits IT Loader Backhoes/Wheel Loaders
		236	CAT 48 INCH QUICK ATTACH PALLET FORKS ATTACHMENT, fits IT Loader Backhoes/Wheel Loaders
229	1998 CAT 426C IT (4X4) LOADER BACKHOE, sn:1YR00622, equipped w/ Rops Canopy, Cat 3054 turbo engine, all wheel steering, work light package, hydraulic IT quick coupler attachment, 4-n-1 loader bucket, standard stick, 24 inch hoe bucket, meter reading: 7,701 hrs	237	2004 MIDLAND SPD-8 ROAD WIDENER, sn:301, equipped w/ John Deere 4045DL (80HP) engine, hydrostatic traction drive system, two speed transmission, work light package, hydraulic grade and slope blade controls, 3 cu. yd. hopper, left or right side discharge direction, 8 ft spread width capability, hydraulic blade extension, 425/65R 22.5 front tires, 11R 22.5 rear tires, additional extensions and other accessories included, meter reading: 3,029 hrs
230	1997 CAT 426C (4X4) LOADER BACKHOE, sn:1YR00497, equipped w/ Rops Canopy, Cat 3054 engine, all wheel steering, work light package, hydraulic IT quick coupler attachment, 4-n-1 loader bucket, standard stick, 36 inch hoe bucket, meter reading: 7,714 hrs	238	2004 LEEBOY L8515R CONVEYOR CRAWLER (RUBBER TRACK) ASPHALT PAVER, sn:42798HD, equipped w/ Hatz 4 cyl diesel engine, hydrostatic track drive transmission, dual operator stations, slope and grade controls, proportional electronic steering, work light package, 7.5 ton hopper capacity, Legend heated vibrating screed system, 8 ft to 15 ft paving width capability, meter reading: 4,285 hrs
231	2005 CAT 420D (4X4) LOADER BACKHOE, sn:CAT0420DVFD24439, equipped w/ Rops Canopy, Cat 3054T engine, pilot stabilizer controls, work light package, 4-n-1 loader bucket, standard stick, 24 inch hoe bucket, meter reading: 8,688 hrs, ***note: sales tax applies		

THANK YOU FOR ATTENDING OUR AUCTION SALE

4070 NC Hwy 211 E  
LUMBERTON, NC 28358  
(910) 739-0547  
www.meekinsauction.com

Printed:05/20/2015 17:42

## Catalog for Auction:SELCO CONSTRUCTION, INC. SMITHFIELD

Lot#	Description	Lot#	Description
239	LEEBOY L8000B CONVEYOR CRAWLER ASPHALT PAVER, sn:751BH, equipped w/ 3 cyl diesel engine, hydrostatic track drive transmission, steel pads, propane heated screed, meter reading: 1,299 hrs, ***note: sales tax applies	244	1998 CAT CB-434C TANDEM VIBRATORY ROLLER, sn:4DN00302, equipped w/ open station, Cat 3054 engine, hydrostatic transmission, work light package, 56 inch drums, water tanks and spray system, meter reading: 1,867 hrs
240	2001 CAT AP-800C PNEUMATIC (RUBBER TIRE) ASPHALT PAVER, sn:CATAP800C1PM00764, equipped w/ Cat 3054 engine, hydrostatic wheel drive transmission, front wheel assist, work light package, truck hitch, 195 cu. ft. hopper capacity, Cat Extend-A-Mat 8-16B electric heated screed, 8 ft to 16 ft paving width capability, new screed plates and steering bogies recently installed, meter reading: 7,193 hrs	245	2005 INGERSOLL-RAND DD-28HF ULTRA-PAC SERIES TANDEM VIBRATORY ROLLER, sn:184120, equipped w/ Roll Bar, Kubota V2203 Series 2.2L engine, hydrostatic transmission, work light package, 49 inch drums, high frequency series, water spray system, meter reading: 1,109 hrs
241	2005 ROADTEC RP150 PNEUMATIC (RUBBER TIRE) ASPHALT PAVER, sn:RP150-164, equipped w/ John Deere 6.8L diesel engine, hydrostatic wheel drive transmission, dual operator stations, fume extraction system, work light package, washdown system, steer assist, Carlson EZIII-0813.5 electric heated screed, sn:21870305, auger sonics, 16.00-24 rear tires, meter reading: 3,096 hrs, ***note: sales tax applies	246	2004 INGERSOLL-RAND DD-28HF ULTRA-PAC SERIES TANDEM VIBRATORY ROLLER, sn:176622, equipped w/ Roll Bar, Kubota V2203 Series 2.2L engine, hydrostatic transmission, work light package, 49 inch drums, high frequency series, water spray system, meter reading: 1,047hrs
242	2003 INTERNATIONAL 4300 ASPHALT DISTRIBUTOR TRUCK, sn:1HTMNAAL33H557317, equipped w/ DT466 engine, automatic transmission, cruise, air brakes, 445 wheel base, 14 ft body with Etnyre asphalt distributor tank, rear pony motor, front mount water tank accessory, spray bar and wand, work light package, odometer reading: 244,191 miles	247	2000 CAT CB-335D COMBINATION ASPHALT ROLLER, sn:BBW00259, equipped w/ Rops Canopy, Cat 3014 engine, hydrostatic transmission, work light package, water spray system, 51 inch front vibratory smooth drum, (4) rear pneumatic compaction tires, meter reading: 4,407 hrs
243	1995 CAT CB-534B TANDEM VIBRATORY ROLLER, sn:4JL00097, equipped w/ open station, Cat 3054 engine, hydrostatic transmission, work light package, water spray system, 66 inch drums, meter reading: 12,765 hrs, ***note: sales tax applies	248	1996 INGERSOLL-RAND SD-100D PRO PAC SERIES VIBRATORY SMOOTH DRUM ROLLER, sn:146200, equipped w/ Rops Canopy, Cummins 4BTA3.9 engine, hydrostatic transmission, 84 inch drum, 23.1-26 tires, meter reading: 5,561 hrs
		249	1997 INGERSOLL-RAND SD-70D PRO PAC SERIES VIBRATORY SMOOTH DRUM ROLLER, sn:150198, equipped w/ Rops Canopy, Cummins 4BT3.9 engine, hydrostatic transmission, 66 inch drum, 14.9-24 tires, meter reading: 1,631 hrs

THANK YOU FOR ATTENDING OUR AUCTION SALE

4070 NC Hwy 211 E  
LUMBERTON, NC 28358  
(910) 739-0547  
www.meekinsauction.com

Printed:05/20/2015 17:42

## Catalog for Auction:SELCO CONSTRUCTION, INC. SMITHFIELD

Lot#	Description	Lot#	Description
249A	1986 BITELLI JOLLY SERIES VIBRATORY SMOOTH DRUM ROLLER, sn:02860166, equipped w/ Rops Canopy, Deutz F5L912 diesel engine, hydrostatic transmission, work light package, 76 inch drum, 17.5 R 25 tires, meter reading: 1,741 hrs, ***note: sales tax applies	256	2003 RAMMAX P33/24FM TRENCH ROLLER, sn:3534572, equipped w/ Farymann diesel engine, 33 inch padded drums, walk behind operation, ***note: sales tax applies
250	1995 INGERSOLL-RAND SD-40F VIBRATORY PADFOOT DRUM ROLLER, sn:5873, equipped w/ Rops Canopy, John Deere 4045D engine, hydrostatic transmission, 54 inch drum, 12.4-24 tires, meter reading: 1,979 hrs	257	2003 RAMMAX P33/24FM TRENCH ROLLER, sn:3534570, equipped w/ Farymann diesel engine, 33 inch padded drums, walk behind operation, meter reading: 411 hrs, ***note: sales tax applies
251	2001 NEW HOLLAND TN65D BROOM UTILITY TRACTOR, sn:001236542, equipped w/ Enclosed Cab, Iveco 2.9L 3 cyl (65HP) diesel engine, work light package, Challenger 7 ft hydraulic angle sweeper broom, three point hitch, pto, dual hydraulic remote valve outlets, 6 ft rear box blade attachment, Goodyear 13.6-28 rear turf tires, *note: missing cab doors, meter reading: 4,395 hrs	258	1989 RAMMAX P33/24 TRENCH ROLLER, sn:7225, equipped w/ Farymann diesel engine, 33 inch padded drums, walk behind operation, ***note: sales tax applies
252	1995 FORD-NEW HOLLAND 4630 BROOM UTILITY TRACTOR, sn:BC69055, equipped w/ Rops Canopy, 3 cyl (60HP) diesel engine, 2wd, work light package, 6 ft front mount sweeper broom attachment, three point hitch, pto, 16.9-24 rear tires	259	RAMMAX P33/24 TRENCH ROLLER, sn:UC33070670, equipped w/ Kubota 3 cyl diesel engine, 33 inch padded drums, walk behind operation, meter reading: 738 hrs, ***note: sales tax applies
253	2013 WACKER RTSC2 TRENCH ROLLER, sn:20184000, equipped w/ Kohler KDW1003 series diesel engine, 32 inch padded drums, articulated joint, walk behind operation, wireless and tethered remote controls, meter reading: 197 hrs	260	1995 AMERAMAX 33L2-LR SERIES TRENCH ROLLER, sn:33092650, equipped w/ Lister-Petter diesel engine, 33 inch padded drums, walk behind operation, meter reading: 458 hrs
254	2010 RAMMAX P33/24 SERIES TRENCH ROLLER, sn:34720, equipped w/ conversion update package which includes Yanmar 3TNV76-C diesel engine, 33 inch padded drums, walk behind operation, wireless remote controls, meter reading: 562 hrs	261	INGERSOLL-RAND 84 INCH PADFOOT SHELL KIT ATTACHMENT, fits vibratory smooth drum rollers
255	2002 AMPAC P33/24 TRENCH ROLLER, sn:UC33071202, equipped w/ Lister-Petter diesel engine, 33 inch padded drums, walk behind operation, meter reading: 1,463 hrs	262	INGERSOLL-RAND 66 INCH PADFOOT SHELL KIT ATTACHMENT, fits vibratory smooth drum rollers
		263	2005 MASSEY FERGUSON 471 (4X4) UTILITY TRACTOR, sn:9364BP31007, equipped w/ A/C Cab, Perkins 4 cyl (72HP) engine, synchro shuttle transmission, work light package, brush guard, Massey Ferguson 1055 loader attachment with quick attach loader bucket, three point hitch, pto, dual hydraulic remote valve outlets, drawbar hitch, 11.2-24 front tires, 16.9-30 rear tires, excellent condition, meter reading: 549 hrs

THANK YOU FOR ATTENDING OUR AUCTION SALE

4070 NC Hwy 211 E  
LUMBERTON, NC 28358  
(910) 739-0547  
www.meekinsauction.com

Printed:05/20/2015 17:42

## Catalog for Auction:SELCO CONSTRUCTION, INC. SMITHFIELD

Lot#	Description	Lot#	Description
264	MASSEY FERGUSON 265 UTILITY TRACTOR, sn:9A207283, equipped w/ Rops Canopy, Perkins 4 cyl (60HP) engine, 2wd, work light package, three point hitch, pto, 16.9-28 rear tires, meter reading: 2,002 hrs, ***note: sales tax applies	271	1995 EXTEC 6000 SERIES PORTABLE SCREENING PLANT, sn:3606, equipped w/ Deutz diesel engine, 34 inch wide x 40 ft long hydraulic folding discharge conveyor, two deck aggregate shaker with screens, rear discharge direction, mounted on single axle running gear, 385/65R 22.5 tires, fifth wheel hitch, meter reading: 3,133 hrs
265	MASSEY FERGUSON 230 UTILITY TRACTOR, sn:9A275039, equipped w/ open station, Perkins 3 cyl (40HP) diesel engine, work light package, three point hitch, pto, 13.6-28 rear tires, ***note: sales tax applies	272	POWERSCREEN MARK II SERIES PORTABLE SCREENING PLANT, sn:2719104, equipped w/ Ford diesel engine power unit, single axle running gear, rear discharge direction
266	1952 FORD 8N UTILITY TRACTOR, sn:8N51060, equipped w/ open station, 4 cyl (30HP) gas engine, brush guard, work light package, three point hitch, pto, 11.2-28 rear tires, ***note: sales tax applies	291	2005 SCAG TURF TIGER SERIES COMMERCIAL LAWN MOWER, sn:A6000183, equipped w/ Kohler Command Pro 27HP engine, hydrostatic transmission, zero turn radius, 61 inch cutting deck, meter reading: 2,257 hrs
267	CAT V80D FORKLIFT, sn:41X1055, equipped w/ Rops Canopy, Perkins engine, work light package, dual front tires, 8,000LB lift capability, two stage mast, 72 inch pallet forks, solid cushion tires	292	2012 BMS CHERRY BOMB 600 DUNE BUGGY/ATV, sn:LAPSHU101C0000005, equipped w/ Roll Cage with canopy, 586cc gas engine, 4 speed manual transmission with reverse, two passenger, 2,000LB 12V DC front mount winch, Kenda AT25 x 8.00-12 front tires, Kenda AT25 x 10.00-12 rear tires, meter reading: 58 miles, ***note: sales tax applies
268	1995 TCM FG25N2 FORKLIFT, sn:55703082, equipped w/ Rops Canopy, Nissan 4 cyl propane engine, work light package, 3,000LB lift capability, 2 stage mast, 42 inch pallet forks, all terrain tires, ***note: LP propane tank cylinder not included with sale, belongs to rental company	293	2012 BMS SAND SNIPER DUNE BUGGY/ATV, sn:L54GM2FC4CA0000060, equipped w/ Roll Cage with canopy, windshield, 257cc gas engine, automatic transmission, light package, two passenger, Kenda AT25 x 8.00-12 front tires, Kenda AT25 x 10.00-12 rear tires, cargo rack, meter reading: 568 hrs, ***note: sales tax applies
269	2005 BANDIT BEAST 360 WASTE RECYCLER, sn:001531USA, equipped w/ Cat C15 (700HP) engine, 42 inch diameter by 63 inch wide cuttermill with a 33 inch x 60 inch opening, depending on the material being processed, unit can process as much as 350 cubic yards or 100 tons per hour, total length: 39 ft, feed rate: 18-43 fpm, 48 inch wide x 30 ft long hydraulic folding discharge conveyor, magnetic head pulley, 300 gallon fuel tank, tether and wireless remote controls, mounted on triple axle running gear, 295/75R 22.5 tires, extra screens and accessories included, owner recently spent \$40,000.00 on new walking floor, plates, and other upgrades, fifth wheel hitch, meter reading: 5,755 hrs	294	2012 KANDI DUNE BUGGY/ATV, sn:L5CSEJLE9CM000274, equipped w/ Roll Cage, 149cc gas engine, automatic transmission, two passenger, light package, cargo racks, 21 x 7.00-10 front tires, 22 x 11.00-10 rear tires, ***note: sales tax applies

THANK YOU FOR ATTENDING OUR AUCTION SALE

## Catalog for Auction:SELCO CONSTRUCTION, INC. SMITHFIELD

Lot#	Description	Lot#	Description
295	2012 KANDI KD-49FM5 DUNE BUGGY/ATV, sn:12004383, equipped w/ Roll Cage, 110cc gas engine, light package, cargo rack, 16 x 8.00-7 tires, ***note: sales tax applies	305	1997 INGERSOLL-RAND P100WD AIR COMPRESSOR, sn:278565UFH209, equipped w/ Deutz F3M1011F diesel engine, 100 CFM capability, 100 psi rating, trailer mounted, includes air hoses, tools, and accessories, low meter hrs
296	2007 KYMCO MXU 300 QUAD ATV, sn:1RFBLM20U7B590174, equipped w/ 4-stroke 270cc gas engine, CVT automatic transmission, 2wd, light package, cargo racks, Maxis AT22 x 7-10 front tires, Maxis AT22 x 10-10 rear tires, ***note: sales tax applies	306	AIRCO SUPER HORNET SERIES PORTABLE DC ARC WELDER, sn:W521081, equipped w/ gas engine, 300 amp capability
297	2003 HONDA XR50 KIDS MINI DIRT BIKE, sn:JH2AE03013K308148, equipped w/ 49cc gas engine, 2.50-10 tires, ***note: sales tax applies	307	2015 TOMAHAWK SKID STEER 78 INCH SNOW AND MULCH LOADER BUCKET (UNUSED), ***note: sales tax applies
298	2007 JOHN DEERE GATOR TX SERIES UTILITY VEHICLE/ATV, sn:W04X2XD011048, equipped w/ Kawasaki gas engine, 4x2, light package, manual dump cargo body, Carlisle All Trail II series tires, tow hitch, meter reading: 535 hrs, ***note: sales tax applies	308	2015 TOMAHAWK SKID STEER 78 INCH SNOW AND MULCH LOADER BUCKET (UNUSED), ***note: sales tax applies
299	TSC ALUMINUM TOOL BOXES with contents (Quantity of 3)	309	2015 TOMAHAWK 72 INCH SKID STEER SMOOTH LOADER BUCKET (UNUSED), ***note: sales tax applies
300	TSC ALUMINUM DEEP CHEST SERIES TOOL BOX with contents	310	2015 TOMAHAWK 72 INCH SKID STEER SMOOTH LOADER BUCKET (UNUSED), ***note: sales tax applies
301	KEYSTONE SIDE MOUNT ALUMINUM TOOL BOXES (Quantity of 2) ***note: sales tax applies***	311	2015 TOMAHAWK 66 INCH SKID STEER SMOOTH LOADER BUCKET (UNUSED), ***note: sales tax applies
302	KARGO MASTER UTILITY CARGO RACK, fits pickups or service utility trucks ***note: sales tax applies***	312	2015 TOMAHAWK HEAVY DUTY SERIES 72 INCH SKID STEER BRUSH GRAPPLE (UNUSED), ***note: sales tax applies
303	2007 GREENSCAPE 600-3 CONSERVATION SEEDER, sn:217, equipped w/ 60 inch working width capability, 73 inch overall width, all ground driven, (3) seed box compartments, Emerge-Plus Precision small seed box series, front and rear spike rollers, rear cultipacker roller, fits three point hitch tractors, excellent condition	313	2015 TOMAHAWK HEAVY DUTY SERIES 72 INCH SKID STEER BRUSH GRAPPLE (UNUSED), ***note: sales tax applies
304	FINN B70 STRAW BLOWER, sn:RMA1767, equipped w/ Wisconsin gas engine, trailer mounted	314	TAYLOR-PITTSBURGH FIELD GENERAL ARENA RENOVATOR TILLAGE HARROW ATTACHMENT, sn:071943, equipped w/ 72 inch working width capability, 6 ft lift type tool-less adjustable series, model number: 233-AR-72, (15) high vibration tines, rear crumbling basket, fits three point hitch tractors, excellent condition

THANK YOU FOR ATTENDING OUR AUCTION SALE

4070 NC Hwy 211 E  
LUMBERTON, NC 28358  
(910) 739-0547  
www.meekinsauction.com

Printed:05/20/2015 17:42

## Catalog for Auction:SELCO CONSTRUCTION, INC. SMITHFIELD

Lot#	Description	Lot#	Description
315	2015 TOMAHAWK 66 INCH SKID STEER LOADER GRAPPLE BUCKET (UNUSED), ***note: sales tax applies	327	2015 TOMAHAWK SKID STEER QUICK TACH MOUNT PLATE ATTACHMENT (UNUSED), ***note: sales tax applies
316	2015 TOMAHAWK 66 INCH SKID STEER LOADER GRAPPLE BUCKET (UNUSED), ***note: sales tax applies	328	2015 TOMAHAWK SKID STEER QUICK TACH MOUNT PLATE ATTACHMENT (UNUSED), ***note: sales tax applies
317	2015 TOMAHAWK 66 INCH SKID STEER LOADER GRAPPLE BUCKET (UNUSED), ***note: sales tax applies	329	2015 TOMAHAWK SKID STEER QUICK TACH MOUNT PLATE ATTACHMENT (UNUSED), ***note: sales tax applies
318	2015 TOMAHAWK SKID STEER LOADER STUMP BUCKET ATTACHMENT (UNUSED), ***note: sales tax applies	330	2015 TOMAHAWK SKID STEER QUICK TACH MOUNT PLATE ATTACHMENT (UNUSED), ***note: sales tax applies
319	2015 TOMAHAWK 42 INCH SKID STEER PALLET FORKS ATTACHMENT (UNUSED), ***note: sales tax applies	331	2015 TOMAHAWK SKID STEER QUICK TACH MOUNT PLATE ATTACHMENT (UNUSED), ***note: sales tax applies
320	2015 TOMAHAWK 42 INCH SKID STEER PALLET FORKS ATTACHMENT (UNUSED), ***note: sales tax applies	332	2015 TOMAHAWK SKID STEER QUICK TACH MOUNT PLATE ATTACHMENT (UNUSED), ***note: sales tax applies
321	2015 TOMAHAWK 42 INCH SKID STEER PALLET FORKS ATTACHMENT (UNUSED), ***note: sales tax applies	333	2015 TOMAHAWK SKID STEER QUICK TACH MOUNT PLATE ATTACHMENT (UNUSED), ***note: sales tax applies
322	2015 TOMAHAWK SKID STEER LOADER 72 INCH ROCK BUCKET (UNUSED), ***note: sales tax applies	334	2015 TOMAHAWK SKID STEER BALE SPEAR ATTACHMENT (UNUSED), equipped w/ 1800LBS max weight capacity, single tine, ***sales tax applies
323	2015 TOMAHAWK SKID STEER LOADER 72 INCH ROCK BUCKET (UNUSED), ***note: sales tax applies	335	2015 TOMAHAWK SKID STEER BALE SPEAR ATTACHMENT (UNUSED), equipped w/ 1800LBS max weight capacity, single tine, ***sales tax applies
324	2015 TOMAHAWK SKID STEER QUICK TACH MOUNT PLATE ATTACHMENT (UNUSED), ***note: sales tax applies	336	2015 TOMAHAWK SKID STEER BALE SPEAR ATTACHMENT (UNUSED), equipped w/ 1800LBS max weight capacity, single tine, ***sales tax applies
325	2015 TOMAHAWK SKID STEER QUICK TACH MOUNT PLATE ATTACHMENT (UNUSED), ***note: sales tax applies	337	2015 TOMAHAWK 66 INCH SKID STEER SMOOTH LOADER BUCKET (UNUSED), ***note: sales tax applies
326	2015 TOMAHAWK SKID STEER QUICK TACH MOUNT PLATE ATTACHMENT (UNUSED), ***note: sales tax applies	338	GEITH 36 INCH EXCAVATOR DIGGING BUCKET

THANK YOU FOR ATTENDING OUR AUCTION SALE



4070 NC Hwy 211 E  
LUMBERTON, NC 28358  
(910) 739-0547  
www.meekinsauction.com

Printed:05/20/2015 17:42

## Catalog for Auction:SELCO CONSTRUCTION, INC. SMITHFIELD

Lot#	Description	Lot#	Description
339	EXCAVATOR 48 INCH DIGGING BUCKET	355	2015 TOMAHAWK 72 INCH SKID STEER SMOOTH LOADER BUCKET (UNUSED), ***note: sales tax applies
340	EXCAVATOR 42 INCH DIGGING BUCKET		
341	EXCAVATOR 42 INCH DIGGING BUCKET	356	HOOK AND BLOCK CRANE ATTACHMENTS (Quantity of 2)
342	C & P ENTERPRISES 24 INCH EXCAVATOR DIGGING BUCKET, sn:59080032, fits Hitachi EX150 model hydraulic excavators	357	2015 TOMAHAWK 66 INCH SKID STEER LOADER GRAPPLE BUCKET (UNUSED), ***note: sales tax applies
343	ESCO YHD TYPE SERIES EXCAVATOR DIGGING BUCKET, sn:RHS25652, equipped w/ 1 YD capacity rating, 36 inch working width, fits Komatsu PC220-3 model hydraulic excavators ***note: sales tax applies***	358	2015 TOMAHAWK 66 INCH SKID STEER LOADER GRAPPLE BUCKET (UNUSED), ***note: sales tax applies
344	WICKER MACHINE COMPANY CLAMP FORK WHEEL LOADER ATTACHMENT, sn:12942, equipped w/ 86 inch overall width, dual hydraulic cylinders, heavy duty frame, fits Komatsu WA450-5 size wheel loaders	359	2015 TOMAHAWK SKID STEER BALE SPEAR ATTACHMENT (UNUSED), equipped w/ 1800LBS max weight capacity, single tine, ***sales tax applies
345	CAT 4-N-1 WHEEL LOADER BUCKET, sn:7K391, equipped w/ 96 inch working width, pin-on, fits Cat 930 model wheel loaders	360	2015 TOMAHAWK SKID STEER BALE SPEAR ATTACHMENT (UNUSED), equipped w/ 1800LBS max weight capacity, single tine, ***sales tax applies
346	EXCAVATOR 64 INCH CLEANOUT BUCKET	361	2015 TOMAHAWK 66 INCH SKID STEER SMOOTH LOADER BUCKET (UNUSED), ***note: sales tax applies
347	FLECO CRAWLER TRACTOR ROOT RAKE ATTACHMENT, equipped w/ 138 inch working width	362	2015 TOMAHAWK 72 INCH SKID STEER SMOOTH LOADER BUCKET (UNUSED), ***note: sales tax applies
348	YAUN 1.25 YD DRAGLINE BUCKET ATTACHMENT, sn:6935	363	2015 TOMAHAWK 66 INCH SKID STEER SMOOTH LOADER BUCKET (UNUSED), ***note: sales tax applies
349	HENDRIX 1TS DRAGLINE BUCKET ATTACHMENT, sn:45131	364	DRAGLINE CRANE BOOM, equipped w/ jib
350	DRAGLINE BUCKET ATTACHMENT	365	2015 TOMAHAWK SKID STEER BALE SPEAR ATTACHMENT (UNUSED), equipped w/ 1800LBS max weight capacity, single tine, ***sales tax applies
351	DRAGLINE CLAMSHELL BUCKET ATTACHMENT		
352	JCB 16 INCH LOADER BACKHOE BUCKET	366	2015 TOMAHAWK HEAVY DUTY SERIES 72 INCH SKID STEER BRUSH GRAPPLE (UNUSED), ***note: sales tax applies
353	16 INCH LOADER BACKHOE BUCKET		
354	CAT 24 INCH LOADER BACKHOE BUCKET, sn:N651, fits Cat 416/426/436 model loader backhoes		

THANK YOU FOR ATTENDING OUR AUCTION SALE

4070 NC Hwy 211 E  
LUMBERTON, NC 28358  
(910) 739-0547  
www.meekinsauction.com

Printed:05/20/2015 17:42

## Catalog for Auction:SELCO CONSTRUCTION, INC. SMITHFIELD

Lot#	Description	Lot#	Description
367	2015 TOMAHAWK HEAVY DUTY SERIES 72 INCH SKID STEER BRUSH GRAPPLE (UNUSED), ***note: sales tax applies	380	2015 TOMAHAWK 42 INCH SKID STEER PALLET FORKS ATTACHMENT (UNUSED), ***note: sales tax applies
368	2015 TOMAHAWK 66 INCH SKID STEER BRUSH GRAPPLE ATTACHMENT (UNUSED), ***note: sales tax applies	381	2015 TOMAHAWK 42 INCH SKID STEER PALLET FORKS ATTACHMENT (UNUSED), ***note: sales tax applies
369	2015 TOMAHAWK 72 INCH SKID STEER BRUSH GRAPPLE ATTACHMENT (UNUSED), ***note: sales tax applies	382	TROY-BILT HORSE SERIES REAR-TINE LANDSCAPE TILLER, sn:120560304066, equipped w/ Briggs & Stratton 7.0HP gas engine, walk behind operation, ***note: sales tax applies
370	2015 TOMAHAWK 66 INCH SKID STEER BRUSH GRAPPLE ATTACHMENT (UNUSED), ***notes: sales tax applies	383	NORDIC TRAC EXP2000XL HOME EXERCISE TREADMILL ***note: sales tax applies
371	2015 TOMAHAWK SKID STEER QUICK TACH MOUNT PLATE ATTACHMENT (UNUSED), ***note: sales tax applies	384	2015 TOMAHAWK SKID STEER QUICK TACH MOUNT PLATE ATTACHMENT (UNUSED), ***note: sales tax applies
372	2015 TOMAHAWK SKID STEER QUICK TACH MOUNT PLATE ATTACHMENT (UNUSED), ***note: sales tax applies	385	2015 TOMAHAWK SKID STEER QUICK TACH MOUNT PLATE ATTACHMENT (UNUSED), ***note: sales tax applies
373	CONSTRUCTION WORK SIGNS		
374	2015 TOMAHAWK SKID STEER QUICK TACH MOUNT PLATE ATTACHMENT (UNUSED), ***note: sales tax applies	386	2015 TOMAHAWK SKID STEER QUICK TACH MOUNT PLATE ATTACHMENT (UNUSED), ***note: sales tax applies
375	2015 TOMAHAWK SKID STEER QUICK TACH MOUNT PLATE ATTACHMENT (UNUSED), ***note: sales tax applies	387	2015 TOMAHAWK SKID STEER QUICK TACH MOUNT PLATE ATTACHMENT (UNUSED), ***note: sales tax applies
376	2015 TOMAHAWK SKID STEER QUICK TACH MOUNT PLATE ATTACHMENT (UNUSED), ***note: sales tax applies	388	2001 TARGET PORTACUT SERIES IV CONCRETE SAW, sn:351868, equipped w/ Honda GX390 (13.0HP) engine, self propelled, 18 inch blade capacity, walk behind operation
377	2015 TOMAHAWK SKID STEER QUICK TACH MOUNT PLATE ATTACHMENT (UNUSED), ***note: sales tax applies	389	LARGE QUANTITY OF DECORATIVE PATIO/LANDSCAPING ROCK
378	2015 TOMAHAWK SKID STEER LOADER STUMP BUCKET ATTACHMENT (UNUSED), ***note: sales tax applies	390	STONE HEAVY DUTY TRUCK BRAKE SHOES (Large Quantity)
379	2015 TOMAHAWK 42 INCH SKID STEER PALLET FORKS ATTACHMENT (UNUSED), ***note: sales tax applies	391	PALLET OF CONCRETE CENTER BLOCK BUILDING UNITS
		392	LARGE QUANTITY OF HEAVY DUTY WATER HOSES, various makes and sizes

THANK YOU FOR ATTENDING OUR AUCTION SALE

4070 NC Hwy 211 E  
LUMBERTON, NC 28358  
(910) 739-0547  
www.meekinsauction.com

Printed:05/20/2015 17:42

## Catalog for Auction:SELCO CONSTRUCTION, INC. SMITHFIELD

Lot#	Description	Lot#	Description
393	SILVAN INDUSTRIES FUEL & LUBE TRUCK PRODUCT TANKS (Quantity of 3)	408	HI-TEK COMMERCIAL LIGHTING FIXTURES, comes with Champion Skid Mounted Air Compressor
394	LARGE ASSORTMENT OF CATERPILLAR CUTTING EDGE BLADES, fits motor graders and wheel loaders	409	ASSORTMENT OF PNEUMATIC AIR HAMMERS/BREAKERS, various makes and sizes, quantity of 4
395	STONE HEAVY DUTY TRUCK BRAKE SHOES (Large Quantity)	410	PALLET OF MANHOLE COVERS, GRATES, CONCRETE FORMS
396	PALLET ASSORTMENT OF REELCRAFT SERVICE HOSE REELS	411	MILLER MIGHT-EVAC SELF-RETRACTING LIFELINE with EMERGENCY RESCUE, equipped w/ 400LB rated capacity Miller Tripod
397	UTILITY CARGO STORAGE RACK, fits service trucks or pickups	412	YARA DIESEL EXHAUST FLUID 55 GALLON CHEMICAL BARREL, equipped w/ hand transfer pump, two funnels
398	READING 8 FT SERVICE TRUCK BED BODY, equipped w/ utility cargo rack, Contico tool storage chest	414	LARGE QUANTITY OF WIRE ROPE LIFTING SLINGS, LIFTING CHAIN, and other accessories
399	AM GENERAL 14 FT CARGO TRUCK BED BODY, equipped w/ tailgate, flip-down side panels	415	PIPE LIFT HOOK ATTACHMENT with assorted contractor jobsite accessories
400	PALLET OF DECORATIVE LANDSCAPE BUILDING BRICK UNITS	416	SHOP TABLE with tool box and contents
401	JOBSITE TRAFFIC SAFETY SIGNS & STANDS, various makes and sizes, large quantity	417	SHOP SHELVING UNIT PANELS
402	ASSORTED ITEMS (Equipment Parts, Product Supplies, Tools, Misc. Items)	418	SHOP TABLE
403	ASSORTMENT OF JOBSITE EROSION CONTROL BLANKETS and other accessories	419	SHOP WORK TABLE/DESK
404	FEDERAL WHITE CEMENT INC. MASONRY CEMENT MIX	420	2003 WACKER PDT3A WATER PUMP, sn:5422083, equipped w/ Honda gas engine, mobility kit, 3 inch connection
405	LARGE QUANTITY OF SOUTHERN PRODUCTS & SILICA CO., INC. (1 CU. FT.) BAGS OF FINE SAND	421	LARGE QUANTITY OF CONTRACTOR JOBSITE HAND TOOLS (Shovels, Rakes, Hammers, Etc)
406	EROSION CONTROL FENCING MATERIAL (Large Quantity)	422	DISC BLADE EQUIPMENT ATTACHMENT
407	CHAMPION SKID MOUNTED AIR COMPRESSOR (Inoperable/Parts Only)	423	HOMELITE 111DP3-B DIAPHRAGM WATER PUMP, sn:HT1880001, equipped w/ Briggs & Stratton 3.5HP engine, 3 inch connection, skid mounted, comes with Homelite AP520-B 2 Inch Centrifugal Pump, sn:HA0780517

THANK YOU FOR ATTENDING OUR AUCTION SALE

## Catalog for Auction:SELCO CONSTRUCTION, INC. SMITHFIELD

Lot#	Description	Lot#	Description
424	PALLET OF ASSORTED INDUSTRIAL TRACTOR EQUIPMENT TIRES, various makes and sizes, quantity of 5	440	STONEMIZER ROCK BOX, equipped w/ 60 inch inside width, lift bars
425	PALLET OF ASSORTED TRUCK & EQUIPMENT TIRES & RIMS, various makes and sizes, quantity of 7	441	CONCRETE WIRE PAD SECTIONS (Large Quantity)
426	PALLET OF ASSORTED TRAILER TIRES & RIMS, various makes and sizes, quantity of 5	442	EFFICIENCY 8 FT X 16 FT STEEL TRENCH SHIELD, equipped w/ 6 inch walls
427	UNUSED CAT CUTTING EDGE BLADES, fits motor graders, wheel loaders	443	EFFICIENCY 4 FT TRENCH SHIELD SPREADER PIPE SECTIONS (Quantity of 4)
428	UNUSED CAT CUTTING EDGE BLADES, fits motor graders, wheel loaders	444	DUMP TRUCK BED TAILGATES, steel composition, quantity of 3
429	TEREX AMIDA 0DLSE15LA PORTABLE ARROW BOARD, sn:0004-63875, solar battery powered detour-lite series, 15 light mode, LED optimized, stabilizer legs	445	SHOPMADE ASPHALT SPEED BUMP MAKER ATTACHMENT
430	TRAFFIC SIGNS with large quantity of galvanized steel sign posts	446	PALLET ASSORTMENT OF MOTOR GRADER SCARIFIER RIPPER SHANKS, EXCAVATOR/BACKHOE BUCKET TEETH, and other accessories
431	JOBSITE SAFETY TRAFFIC SIGNS & ACCESSORIES (Large Quantity)	446A	LARGE ASSORTMENT OF EXCAVATOR/LOADER BACKHOE BUCKET TEETH (Various Makes and Sizes)
432	KORMAN TRAFFIC SIGN TRIPOD STANDS (Large Quantity)	446B	LARGE ASSORTMENT OF EXCAVATOR/LOADER BACKHOE BUCKET TEETH (Various Makes and Sizes)
433	ROAD BARRICADE SIGN SECTIONS	447	TULSA HEAVY DUTY WINCH TRUCK ATTACHMENT, equipped w/ headache rack, frame mount ***note: sales tax applies***
434	WATER METER BOXES, PIPE FITTINGS, ASSORTED EQUIPMENT PARTS	448	FORESTRY-LOGGING WETLAND WOODEN MATS (Large Quantity)
435	ASSORTED ITEMS (Pipe Fittings, Valves, and other utility contractor job accessories)	449	SWEEPSTER RHFA 3PT SWEEPER BROOM ATTACHMENT, sn:93599, equipped w/ 6 ft working width, pto driven, fits three point hitch tractors
436	U.S. FOUNDRY & EAST JORDAN IRON WORKS GRATES AND HOODS	450	PALLET OF WATER DRAINAGE PIPE FITTINGS (Various Makes and Sizes)
437	CONCRETE PLACER RAKES & ACCESSORIES	451	HYDRAULIC THUMB EXCAVATOR ATTACHMENT
438	LARIN HEAVY DUTY VISE MECHANICS TRUCK ACCESSORY		
439	STEEL I-BEAMS with scrap metal items		

THANK YOU FOR ATTENDING OUR AUCTION SALE

4070 NC Hwy 211 E  
LUMBERTON, NC 28358  
(910) 739-0547  
www.meekinsauction.com

Printed:05/20/2015 17:42

## Catalog for Auction:SELCO CONSTRUCTION, INC. SMITHFIELD

Lot#	Description	Lot#	Description
452	KING TF2H DISC HARROW ATTACHMENT, sn:62504, equipped w/ 90 inch working width, (15) disc blades, *note: item missing parts, fits three point hitch tractors	465	ARMOUR 12.5/80-18 INDUSTRIAL TRACTOR TIRES, equipped w/ rims, quantity of 4
452A	FORESTRY-LOGGING WETLAND WOODEN MAT PANELS (Quantity of 3 Sections)	466	POWER MARK 19.5L-24 INDUSTRIAL LUG I TRACTOR TIRES, equipped w/ rims, quantity of 2
453	EFFICIENCY 6 FT TRENCH SHIELD SPREADER PIPE SECTIONS (Quantity of 5)	467	GOODYEAR 14.9 R 34 DYNA TORQUE RADIAL INDUSTRIAL TRACTOR TIRES, equipped w/ rims, quantity of 2
454	CROWN 8SG PORTABLE MORTAR MIXER, sn:1303, equipped w/ gas engine	468	GOODYEAR 340/80R 18 INDUSTRIAL TRACTOR TIRE & RIM
455	ASSORTMENT OF HYDRAULIC EXCAVATOR CYLINDERS with parts and accessories	469	FIRESTONE 14.9 R 34 RADIAL ALL TRACTION FWD INDUSTRIAL TRACTOR TIRES, equipped w/ rims, quantity of 2
456	TRENCH BOX EXTENSION, equipped w/ 4 ft x 20 ft steel trench shield extension size, 8 inch walls	470	FIRESTONE 18.4 R 46 RADIAL ALL TRACTION 23 SERIES INDUSTRIAL TRACTOR TIRES, equipped w/ rims, quantity of 2
457	STONEMIZER ROCK BOX, equipped w/ 62 inch inside width, lift bars	471	FIRESTONE 18.4 R 46 RADIAL ALL TRACTION 23 SERIES INDUSTRIAL TRACTOR TIRES, equipped w/ rims, quantity of 2
458	MANHOLE TRENCH SHIELD BOX, equipped w/ 8 ft x 10 ft shield size, 4 ft spreader pipe sections, 4 inch walls	472	JOHN DEERE 3-ROW BOTTOM PLOW ATTACHMENT, sn:A17710, fits three point hitch tractors, ***note: sales tax applies
459	EFFICIENCY SM-EWHD-9 STONEMIZER ROCK BOX, sn:129957, equipped w/ lift bar, 9 cu yd capacity, 75 inch inside width	473	CF POWER LINE 5 FT ROTARY CUTTER (UNUSED), equipped w/ 8 inch sides, tail wheel, fits three point hitch tractors, ***note: sales tax applies
460	GAR-BRO ROCK HOPPER	474	CONTRACTOR SCAFFOLDING EQUIPMENT
461	MANHOLE BOX SHIELD EXTENSION, equipped w/ 4 ft x 10 ft shield size, 2 ft spreader pipe sections, 5 inch walls	474A	C-FRAME CRAWLER DOZER ATTACHMENT
462	EFFICIENCY TRENCH SHIELD SPREADER PIPE SECTIONS, various lengths, quantity of 5 pipe sections	475	DRESSER CRAWLER DOZER BLADE ATTACHMENT, equipped w/ 148 inch working width, fits Dresser TD-15 size crawler dozers
463	PALLET ASSORTMENT OF EQUIPMENT PARTS AND ACCESSORIES		
464	EFFICIENCY 8 FT X 16 FT STEEL TRENCH SHIELD, equipped w/ 4 ft spreader pipe sections, 5 inch walls		

THANK YOU FOR ATTENDING OUR AUCTION SALE

4070 NC Hwy 211 E  
LUMBERTON, NC 28358  
(910) 739-0547  
www.meekinsauction.com

Printed:05/20/2015 17:42

## Catalog for Auction:SELCO CONSTRUCTION, INC. SMITHFIELD

Lot#	Description	Lot#	Description
476	ANTHONY MRT-3500 HYDRAULIC LIFTGATE TRUCK ATTACHMENT, sn:Q003013, equipped w/ 3,500LB maximum capacity rating	488A	GENERAL INDUSTRIES 10,000 GALLON FUEL STORAGE TANK, ***note: buyer responsible for loading and item must be removed from sale site within 15 to 20 business days from date of the auction
478	MACK COMMERCIAL TRUCK CHASSIS, equipped w/ hydraulic tank, double frame, and other components	489	1998 MACK EM5-290 MODEL SERIES COMMERCIAL TRUCK ENGINE, sn:8C2207, equipped w/ 290 horsepower rating
479	GODWIN 14 FT STEEL DUMP BODY with contents	490	CONCRETE BUILDING FORMS (Quantity of 3)
480	ASPHALT PAVER 30 FT ALUMINUM SKI POLE PAVING ACCESSORY	491	PALLET OF STEEL PLATES/BUILDING MATERIAL
481	LEEBOY SKID MOUNTED ASPHALT TACK UNIT	491A	GENERAL INDUSTRIES 6,000 GALLON FUEL STORAGE TANK, ***note: buyer responsible for loading and item must be removed from sale site within 15 to 20 business days from date of the auction
482	FUEL & LUBE TRUCK PRODUCT STORAGE TANK, comes with (4) storage barrel drums	492	HITACHI EXCAVATOR COUNTERWEIGHT ATTACHMENT, fits Hitachi EX200LC model hydraulic excavators
483	DIESEL FUEL PRODUCT STORAGE TANK, fits service or fuel and lube trucks	493	SHOPMADE PORTABLE HYDRAULIC LOG SPLITTER, equipped w/ Briggs & Stratton 4 cycle (8.0HP) engine
483A	SNYDER 550 GALLON POLY WATER TANK	494	FISHER AIR TANK and (2) FUEL STORAGE TANKS
484	FUEL & LUBE TRUCK PRODUCT STORAGE TANKS with Fill-Rite 20 GPM 12 Volt DC Pump and Contractor Tool Storage Chest	495	KNAPHEIDE 8 FT SERVICE TRUCK BED BODY
485	THERMO KING SBIII-30 REEFER UNIT, sn:1106105497, equipped w/ Isuzu 4 cylinder diesel engine	496	FORD F-SERIES DUALY PICKUP BED BODY, equipped w/ Contico tool box and assorted items
485A	GENERAL INDUSTRIES FUEL STORAGE TANK, equipped w/ storage rack, Tuthill Series 300 electric fuel pump, Fill-Rite Series 900 meter register, hose and nozzle included	497	1998 MACK EM5-290 MODEL SERIES COMMERCIAL TRUCK ENGINE, sn:8C2553, equipped w/ 290 horsepower rating
486	HYDRAULIC WET LINE KIT TANK	498	COMMERCIAL HEAVY DUTY TRUCK AXLE with 10.00 R 20 tires
487	1984 MACK EM6-300R MODEL SERIES COMMERCIAL TRUCK ENGINE, sn:404735, equipped w/ 300 horsepower rating	499	HEAVY DUTY COMMERCIAL TRUCK AXLE with Mack camelback suspension, 10.00 R 22 tires
488	MAXON MAXIII MODEL SERIES HYDRAULIC LIFT GATE TRUCK ACCESSORY with Storage Tool Chest and Truck Bumper		

THANK YOU FOR ATTENDING OUR AUCTION SALE

4070 NC Hwy 211 E  
LUMBERTON, NC 28358  
(910) 739-0547  
www.meekinsauction.com

Printed:05/20/2015 17:42

## Catalog for Auction:SELCO CONSTRUCTION, INC. SMITHFIELD

Lot#	Description	Lot#	Description
500	SKID MOUNTED FUEL STORAGE TANK	514	MACK COMMERCIAL TRUCK CAB
501	KNAPHEIDE 8 FT SERVICE TRUCK BED BODY	515	FIRESTONE 710/70R 38 RADIAL ALL TRACTION DT SERIES INDUSTRIAL TRACTOR TIRES (Quantity of 2)
502	HEAVY DUTY COMMERCIAL TRUCK PARTS & ACCESSORIES	516	EQUIPMENT PARTS, CONTRACTOR JOBSITE SUPPLIES & ACCESSORIES
503	MOBILE HOME TRAILER AXLES (Quantity of 3)	517	DUNLOP 11R 22.5 RADIAL TRUCK TIRES, equipped w/ rims, quantity of 2
504	OX 16 FT (15-17 YD) STEEL DUMP BODY, sn:0B7001037SC, equipped w/ electric tarp system	518	SKID MOUNTED 1500 GALLON WATER TANK, equipped w/ rear spray bar, gravity fed, lift bar
505	FORD F-350 DUALY PICKUP 8 FT BED BODY, equipped w/ tool box and assorted items	519	SHOPMADE UTILITY TRAILER FRAME, equipped w/ spring suspension, triple axle, 7-14.5MH tires
506	FORD F-150 PICKUP 8 FT BED BODY	520	GODWIN 500TR MODEL SERIES STEEL DUMP BODY, sn:GM10043B, equipped w/ 16 ft bed length, tailgate, comes with large quantity of contents including equipment and truck parts, rolls of wire fencing, truck frames, satellite disc, scrap metal assorted items
507	HEAVY DUTY COMMERCIAL TRUCK AXLES, equipped w/ Mack components and accessories	521	COMMERCIAL TRUCK ENGINE (Inoperable/Parts Only)
508	KEWANEE 1175 TANDEM DISC HARROW, equipped w/ heavy duty frame, dual hydraulic folding disc wings, drawbar hitch	522	LARGE QUANTITY OF ALUMINUM/TIN BUILDING MATERIAL SUPPLIES
509	1995 MACK CH613 (T/A) DAY CAB TRUCK TRACTOR (INOPERABLE), sn:1M2AA13Y4SW058939, equipped w/ camelback suspension, hydraulic wet line ***note: sales tax applies***	523	TRANSPORT 35 TON FLATBED TRAILER, sn:TL93930003, equipped w/ 96 inch x 42 ft load deck, wood floor, tandem axle, spring suspension, 285/75R 24.5 tires, ***note: no title available with trailer, sold with bill of sale only
510	1993 MACK RD688S (TRI-AXLE) DUMP TRUCK (INOPERABLE), sn:1M2P267Y9PM015974, equipped w/ steerable air lift third axle, camelback suspension, Godwin 16 FT steel dump body ***note: sales tax applies***	524	ALL CONTENTS ON TRANSPORT FLATBED TRAILER, includes large quantity of tin/aluminum building material, garage doors, assorted parts and accessories, miscellaneous and scrap items
511	MACK COMMERCIAL TRUCK RADIATOR, sn:980305110	800	BINDS FOR WINDOW
512	MACK CH613 TRUCK TRACTOR ENGINE HOOD	801	BROWN TABLE (6) CHAIRS
513	2004 FORD F-150 PICKUP PARTS	802	BROWN TABLE (6) CHAIRS

THANK YOU FOR ATTENDING OUR AUCTION SALE



Catalog for Auction:SELCO CONSTRUCTION, INC. SMITHFIELD

Lot#	Description	Lot#	Description
803	_____BROWN TABLE (6) CHAIRS	828	_____DEER W/SLEIGH
804	_____PLANTS, FLOWERS, MISC	829	_____ORANGE TRANSIT
805	_____BOAT PICTURE	830	_____YELLOW TRANSIT
806	_____TABLE W/(6) CHAIRS	831	_____TABLE W/(6) CHAIRS
807	_____PRINTER, COPIER, SCANNER	832	_____TABLE W/(6) CHAIRS
808	_____COPIER	833	_____TABLE W/(6) CHAIRS
809	_____PINTER, COPIER, SCANNER	834	_____RED LEATHER CHAIR
810	_____COMPUTER, KEYBOARD, MOUSE, MONITOR	835	_____RED LEATHER CHAIR
811	_____HANDHELD RADIOS	836	_____RED LEATHER CHAIR
812	_____TABLE W/(6) CHAIRS	837	_____RED LEATHER CHAIR
813	_____STANDS/FLAGS	838	_____RED LEATHER CHAIR
814	_____TABLE W/(6) CHAIRS	839	_____LEATHER CHAIR
815	_____SHOVELS, PICK, BROOM	840	_____COPIER
816	_____HARDHATS AND MISC ITEMS IN BOX	841	_____COPIER
817	_____TYPEWRITER	842	_____ (2) VACUUMS
818	_____ARM LIGHT	843	_____TABLE W/(6) CHAIRS
819	_____LOCATOR	844	_____TABLE W/(6) CHAIRS
820	_____TABLE W/(6) CHAIRS	845	_____TABLE W/(6) CHAIRS
821	_____MERCHANDISE ON TABLE	846	_____TABLE W/(4) CHAIRS
822	_____TABLE W/(6) CHAIRS	847	_____TABLE
823	_____MERCHANDISE ON TABLE	848	_____9' CHRISTMAS TREE W/ACCESSORIES
824	_____TABLE W/(6) CHAIRS	849	_____DRAFTING TABLE
825	_____TOOL RACK	850	_____DRAFT STOOL
826	_____TOOL RACK	851	_____METAL TABLE
827	_____ROCK SALT	852	_____OFFICE TABLE/DESK

THANK YOU FOR ATTENDING OUR AUCTION SALE

Catalog for Auction:SELCO CONSTRUCTION, INC. SMITHFIELD

Lot#	Description	Lot#	Description
853	_____ (2) RED CHAIRS	878	_____ DESK, CHAIR, BOOKCASE, FILING CABINETS
854	_____ OFFICE DESK CHAIR	879	_____ (2) CHAIRS
855	_____ CREDENZA	880	_____ AIR PURIFIER
856	_____ DRAFT TABLE, LIGHT, METAL TABLE	881	_____ TYPEWRITER
857	_____ CHAIR	882	_____ FAX MACHINE
858	_____ (2) CHAIRS	883	_____ BIG SHREDDER
859	_____ CLOCK	884	_____ COPIER
860	_____ DESK	885	_____ ZEBRA PICTURE
861	_____ CREDENZA	886	_____ LION PICTURE
862	_____ DESK CHAIR	887	_____ DECK, TABLE, (2) END DESK, CHAIR
863	_____ AIR PURIFIER	888	_____ PLANE COPIER
864	_____ TV ONLY *NO STAND*	889	_____ CHAIR
865	_____ PLANNING TABLE	890	_____ COMPUTER
866	_____ CLOCK	891	_____ DESK
867	_____ DESK, BOOKCASE	892	_____ MAP PICTURE
868	_____ PICTURE	893	_____ (2) PICTURES
869	_____ PEDESTAL, (2) CHAIRS, TABLE, LAMP	894	_____ CHAIR
870	_____ VASE PICTURES	895	_____ ELEPHANT PICTURE
871	_____ VASE PICTURES	896	_____ 5-DRAWER FILING CABINET
872	_____ BIRD PICTURES	897	_____ 5-DRAWER FILING CABINET
873	_____ BIRD PICTURES	898	_____ 5-DRAWER FILING CABINET
874	_____ PEDESTAL, (2) CHAIRS, TABLE, LAMP	899	_____ 5-DRAWER FILING CABINET
875	_____ PLANNING RACK	900	_____ 5-DRAWER FILING CABINET
876	_____ PLANNING TABLE	901	_____ 5-DRAWER FILING CABINET
877	_____ PLANNING CHAIR	902	_____ 5-DRAWER FILING CABINET

THANK YOU FOR ATTENDING OUR AUCTION SALE

Catalog for Auction:SELCO CONSTRUCTION, INC. SMITHFIELD

Lot#	Description	Lot#	Description
903	_____ (4) CHAIRS, DESK	928	_____ TV
904	_____ PICTURE	951	_____ ALL METAL RACK
905	_____ PICTURE	952	_____ DRUMS
906	_____ PICTURE	953	_____ METAL & RACKS
907	_____ PICTURE	954	_____ CART & TOOLS
908	_____ PICTURE	955	_____ TOOL BOX & TOOLS
909	_____ LIGHT HOUSE	956	_____ STAND & TOOLS
910	_____ CHAIR	957	_____ JACK
911	_____ CHAIR	958	_____ AIR JACK
912	_____ DESK & CHAIR	959	_____ (2) TRUCK STANDS
913	_____ SHREDDER	960	_____ TORCH CART
914	_____ METAL FILING CABINET	961	_____ MILLER WELDER
915	_____ DESK	962	_____ STEAM CLEANER
916	_____ BOOK CABINET	963	_____ FAN
917	_____ (3) CHAIRS	964	_____ METAL CHOP SAW
918	_____ HOUSE PICTURE	965	_____ METAL TABLE
919	_____ WORLD GLOBE PICTURE	966	_____ PRESS
920	_____ ROSE PICTURE	967	_____ PARTS WASHER
921	_____ PEACE PICTURE	968	_____ PALLET OF GEAR OIL
922	_____ TABLE W/(6) CHAIRS	969	_____ ALTERNATORS
923	_____ (4) METAL CHAIRS	970	_____ STARTERS
924	_____ MARBLE TABLE	971	_____ TEETH & PARTS
925	_____ GE REFRIGERATOR	972	_____ JACKS & JACK STANDS
926	_____ KITCHEN TABLE W/(6) CHAIRS	973	_____ AIR TANK, DRILL, HAMMERS
927	_____ PICTURE	974	_____ HOSE & DRILL

THANK YOU FOR ATTENDING OUR AUCTION SALE

4070 NC Hwy 211 E

Printed:05/20/2015 17:42

LUMBERTON, NC 28358

(910) 739-0547

www.meekinsauction.com

## Catalog for Auction:SELCO CONSTRUCTION, INC. SMITHFIELD

Lot#	Description	Lot#	Description
975	_____ALTERNATOR & STARTERS	1000	_____RACK, NAILS
976	_____LIGHTS	1001	_____REFRIGERATOR
977	_____STANDS	1002	_____BROWN CABINET
978	_____RIGHT ANGLE DRILL	1003	_____FILING CABINET
979	_____RED OIL TANK	1004	_____FIRE PROOF CABINET
980	_____PORT A POWER	1005	_____FILING CABINET
981	_____BRAKE CHAMBERS	1006	_____FILING CABINET
982	_____SOCKET SET, WELDING WIRE	1007	_____SMALL CABINET
983	_____HYDRAULIC JACK	1008	_____CHAIR
984	_____TRANSMISSION JACK	1009	_____CHAIR
985	_____BATTERY CHARGER	1010	_____DESK
986	_____HYDRAULIC JACK	1011	_____DESK
987	_____SMALL JACK	1012	_____LADDER
988	_____TRUCK LIFT, 15,000 LB CAPACITY	1013	_____CHAIR
989	_____BOX OF BINDERS	1014	_____ (6) CHAIRS AND (2) TABLES
990	_____SCRAP STEEL	1015	_____TIRES
991	_____SANDER	1016	_____ (5) TIRES
992	_____DRILL PRESS	1017	_____TRUCK BODY
993	_____METAL TABLE	1018	_____MOTOR, TIRES & RIMS
994	_____PARTS ON WALL	1019	_____TRUCK BODY
995	_____BUGGY CART	1020	_____ (2) BROOMS, MERCHANDISE, CUTTERS
996	_____HEAVY CART	1021	_____TRUCK BODY
997	_____BOLT CUTTER, COME-A-LONG	1022	_____ (2) JACK STANDS
998	_____ALL ITEMS IN SIDE TOOL ROOM	1023	_____INGERSOLL-RAND AIR COMPRESSOR
999	_____ALL UPSTAIR TOOL ROOM	1024	_____AIR COMPRESSOR PARTS

THANK YOU FOR ATTENDING OUR AUCTION SALE

**4070 NC Hwy 211 E  
LUMBERTON, NC 28358  
(910) 739-0547  
www.meekinsauction.com**

**Printed:05/20/2015 17:42****Catalog for Auction:SELCO CONSTRUCTION, INC. SMITHFIELD**

<b>Lot#</b>	<b>Description</b>	<b>Lot#</b>	<b>Description</b>
1025	_____INGERSOLL-RAND AIR COMPRESSOR		
1026	_____SHEET METAL BREAKER		

**THANK YOU FOR ATTENDING OUR AUCTION SALE**

# AUCTION TERMS OF BIDDING AND SALE

ABSOLUTE AUCTION FEATURING EQUIPMENT AND TRUCKS FROM

## **SELCO CONSTRUCTION, INC.**

THURSDAY, MAY 21, 2015 • SMITHFIELD, NORTH CAROLINA



**Lloyd  
Meekins  
& Sons  
Auction Co.**

## **YEAR OF MANUFACTURE MOTOR VEHICLES INFO**

If a Motor Vehicle was built in the year 1980 or later and has a 17-digit vehicle identification number; the year of manufacture is identified by the 10<sup>th</sup> digit from the left, using the chart provided below.

<b>A</b>	<b>1980</b>	<b>N</b>	<b>1992</b>	<b>4</b>	<b>2004</b>
<b>B</b>	<b>1981</b>	<b>P</b>	<b>1993</b>	<b>5</b>	<b>2005</b>
<b>C</b>	<b>1982</b>	<b>R</b>	<b>1994</b>	<b>6</b>	<b>2006</b>
<b>D</b>	<b>1983</b>	<b>S</b>	<b>1995</b>	<b>7</b>	<b>2007</b>
<b>E</b>	<b>1984</b>	<b>T</b>	<b>1996</b>	<b>8</b>	<b>2008</b>
<b>F</b>	<b>1985</b>	<b>V</b>	<b>1997</b>	<b>9</b>	<b>2009</b>
<b>G</b>	<b>1986</b>	<b>W</b>	<b>1998</b>	<b>A</b>	<b>2010</b>
<b>H</b>	<b>1987</b>	<b>X</b>	<b>1999</b>	<b>B</b>	<b>2011</b>
<b>J</b>	<b>1988</b>	<b>Y</b>	<b>2000</b>	<b>C</b>	<b>2012</b>
<b>K</b>	<b>1989</b>	<b>1</b>	<b>2001</b>	<b>D</b>	<b>2013</b>
<b>L</b>	<b>1990</b>	<b>2</b>	<b>2002</b>	<b>E</b>	<b>2014</b>
<b>M</b>	<b>1991</b>	<b>3</b>	<b>2003</b>	<b>F</b>	<b>2015</b>

# SELCO CONSTRUCTION, INC.



**Lloyd  
Meekins  
& Sons  
Auction Co.**

[illegible]



**Lloyd  
Meekins  
& Sons  
Auction Co.**

# NOTES

[illegible]





**Lloyd  
Meekins  
& Sons  
Auction Co.**



**[meekinsauction.com](http://meekinsauction.com)**